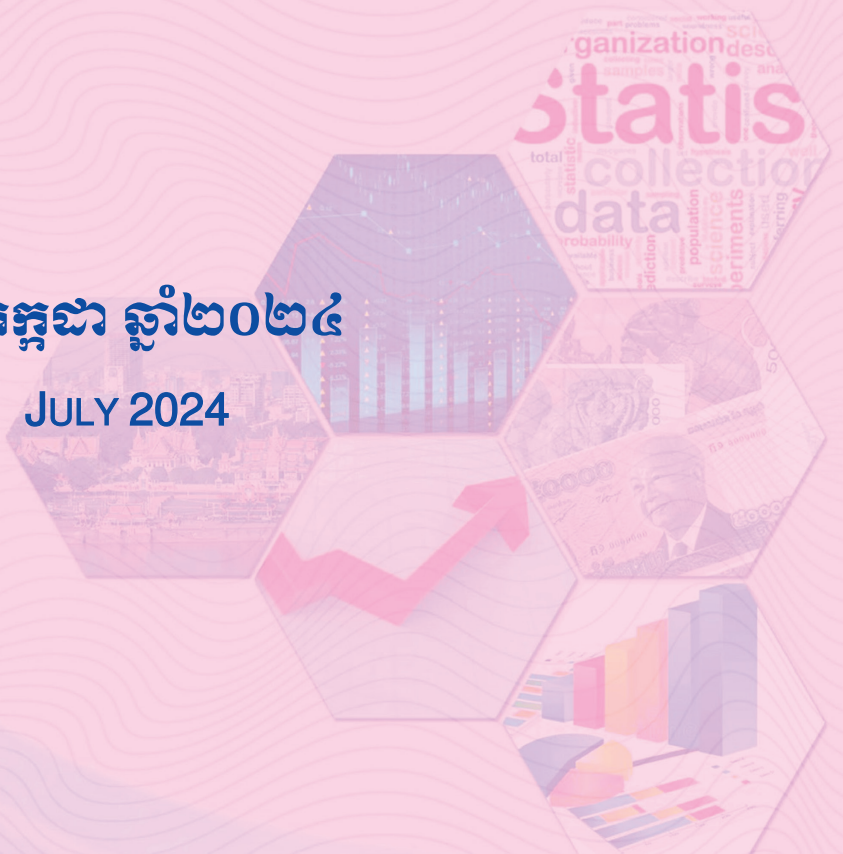




ធនាគារជាតិ នៃ កម្ពុជា
NATIONAL BANK OF CAMBODIA

ព្រឹត្តិបត្រស្ថិតិសេដ្ឋកិច្ច និងរូបិយវត្ថុ **Economic and Monetary Statistics Bulletin**

ខែកក្កដា ឆ្នាំ២០២៤
JULY 2024



លេខ៣៦៩ - ឆ្នាំទី៣២

SERIES NO. 369- 32ND YEAR

Contents

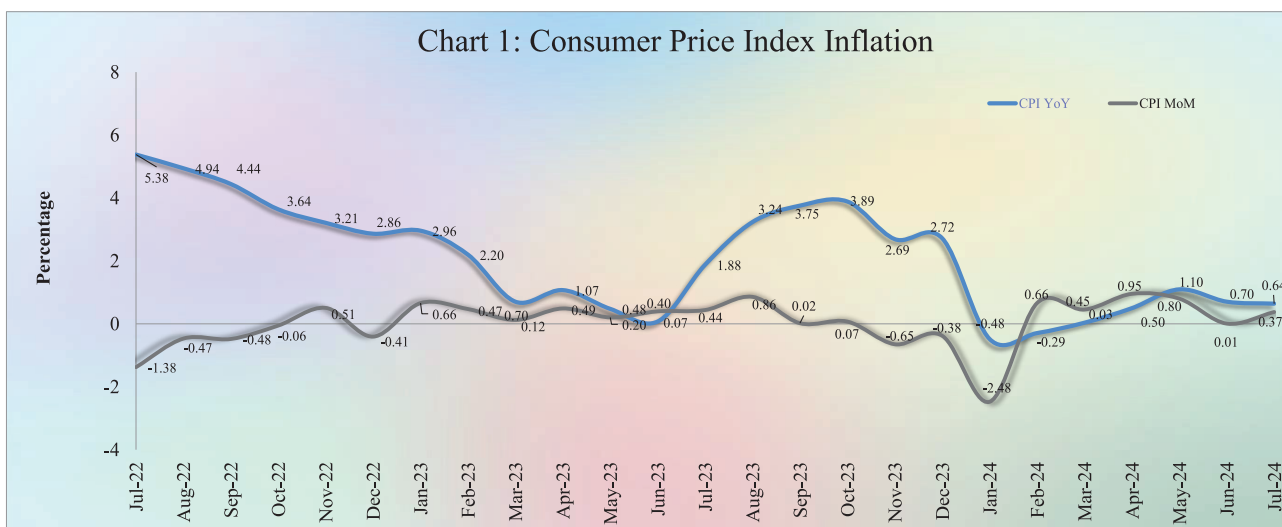
	Page
- Introduction.....	1
- Exchange Rate.....	1
- Money Supply.....	1
- Net Domestic Assets of the Depository Corporations.....	2
- Net Foreign Assets of the Depository Corporations.....	2
- Other Depository Corporations Survey.....	3
- Other Financial Corporations Survey.....	3
- Interest Rates on Loans and Deposits.....	3
- Foreign Tourist Arrivals.....	4
- International Trade in Goods.....	4
Table 1 : Consumer Price Index and Inflation Rate.....	6
Table 2 : Consumer Items Showing Price Increased in July 2024.....	7
Table 3 : Gross Domestic Product.....	8
Chart 1 : GDP by Economic Activity (At Constant 2014 Prices).....	8
Chart 2 : GDP by Economic Activity (At Current Prices).....	8
Table 4 : Residential Property Price Index.....	9
Chart 3 : RPPI Month on Month Change.....	9
Chart 4 : RPPI Year on Year Change.....	9
Table 5 : Approved Investment Projects by Sectors.....	10
Chart 5 : Investment Fixed Assets by Sectors.....	10
Chart 6 : Numbers of Investment Projects by Sectors.....	10
Table 6 : Approved Investment Projects by Major Countries.....	11
Table 7 : Daily Exchange Rate in July 2024 (KHR/USD).....	12
Table 8 : Monthly Exchange Rate (KHR/USD, End-Period).....	13
Chart 7 : Trend of Monthly Exchange Rate.....	13
Table 9 : The Value of KHR Against Other Currencies (Official Buying Rates, End-Period).....	14
Table 10: Deposit Money Bank’s Interest Rates on Deposits and Loans in KHR.....	15
Table 11: Central Bank Survey.....	16
Table 12: Other Depository Corporations Survey.....	17
Table 13: Depository Corporations Survey.....	18
Table 14: Other Financial Corporations Survey.....	19
Table 15: Financial Corporations Survey.....	20
Chart 8 : Financial Corporations Survey.....	21
Chart 9 : Monetary Aggregates Components.....	21
Table 16: Credit Granted by Deposit Money Banks Classified by Industry.....	22
Chart 10: Credit Granted by Deposit Money Banks Classified by Industry.....	22
Table 17: Monthly Change of Credit Granted by Deposit Money Banks Classified by Industry.....	23
Table 18: Deposits with Deposit Money Banks.....	24
Chart 11 : Deposits with Deposit Money Banks Classified by Currency, as of July 2024 (% of Total Deposits).....	24
Table 19: Monthly Change of Deposits with Deposit Money Banks.....	25
Chart 12 : Deposits in KHR Classified by Type, as of July 2024 (% of Total KHR Deposits).....	26
Chart 13 : Deposits in Foreign Currency Classified by Type, as of July 2024 (% of Total FCD).....	26
Table 20: Credit Granted by Micro-Finance Institutions and Non-Government Organizations.....	27
Table 21: KHR-Denominated Checks Clearing Through Clearing House.....	28
Table 22: USD-Denominated Checks Clearing Through Clearing House.....	29
Table 23: Visitor Arrivals in Cambodia.....	30
Table 24: Cambodia’s Imports and Exports.....	31
Table 25: The Banking System in Cambodia.....	32-33

Introduction

Headline consumer price inflation in July 2024 accelerated over the previous month, and the Khmer riel (KHR) appreciated against US dollar. During this period, residents’ deposits in the banking sector continued to increase, while credit to private sector increased slightly. In the meantime, international trade in goods continued to show a deficit.

Consumer Price Index

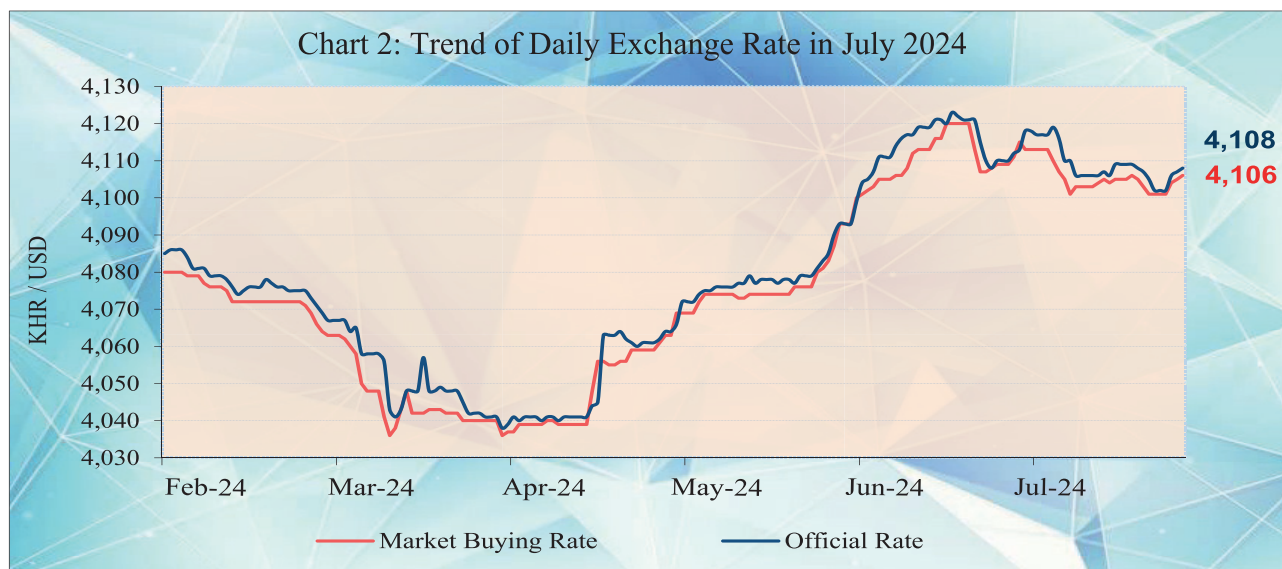
The consumer price inflation in Phnom Penh (month-on-month) rose to 0.37% in July 2024 from 0.01% in June, in which eleven of the twelve group indexes increased, while the other one group index remained unchanged.



During the same period, the year-on-year percentage change of the CPI for all items declined to 0.64% from 0.7% in June, which was mainly due to the decrease in prices of communication, and alcoholic beverages, tobacco and narcotics.

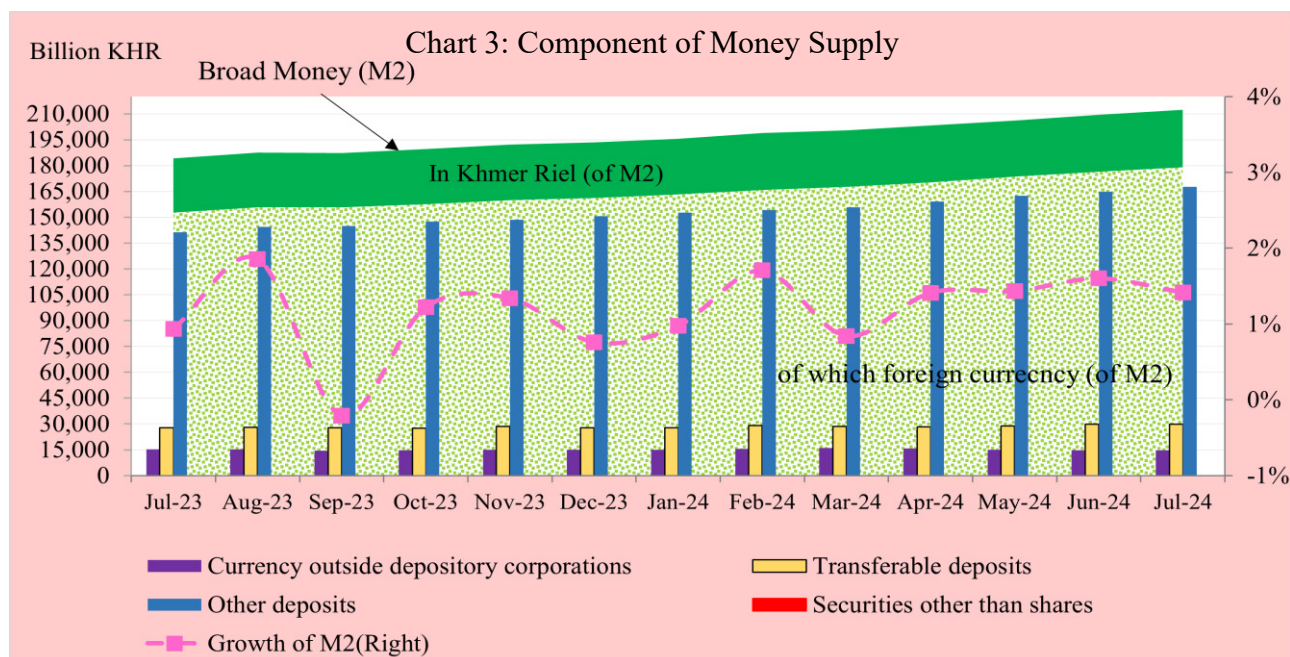
Exchange Rate

The exchange rate (market buying rate) was KHR 4,106 per USD in July 2024, appreciated by 0.07% over June.



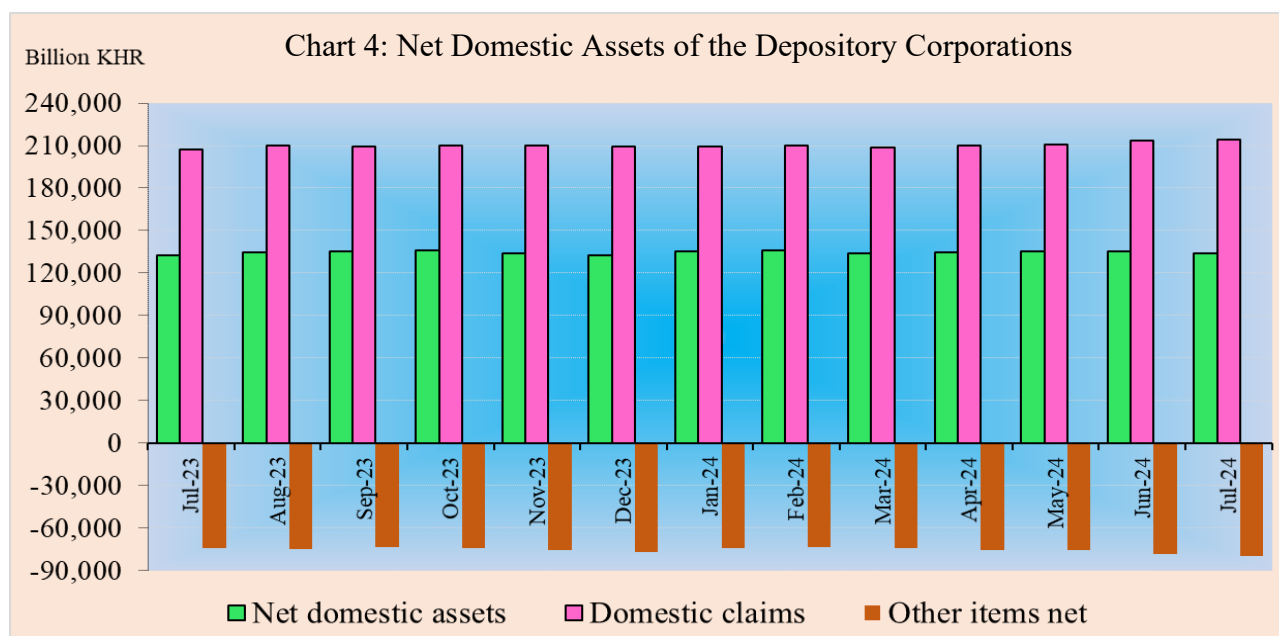
Money Supply

Broad money (M2) increased to KHR 212,461.2 billion in July 2024, increased by 1.4% compared to June. The main components of M2 showed that currency outside depository corporations decreased by 0.6%, while other deposits and transferable deposits increased by 1.8% and 0.4%, respectively.



Net Domestic Assets of the Depository Corporations

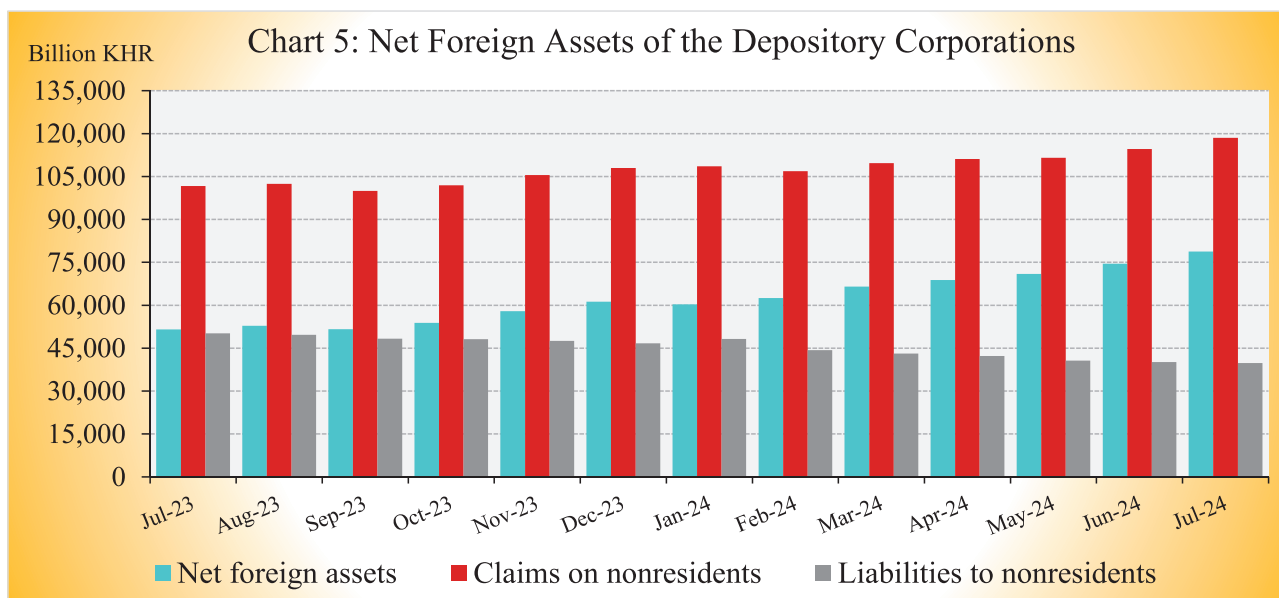
Net domestic assets of the depository corporations declined by 1% to KHR 133,678.7 billion in July 2024 compared to June. This was due to the decrease of 2.5% in other items net, while net domestic credit increased by 0.3%.



The increase in net domestic credit was due to the increase of net credit to nonfinancial public sector, net credit to other financial corporations, and credit to private sector, by 0.6%, 0.3%, and 0.2%, respectively. The decrease in other items net was due to a decrease of 8% in others along with an increase of 1.7% in capital accounts.

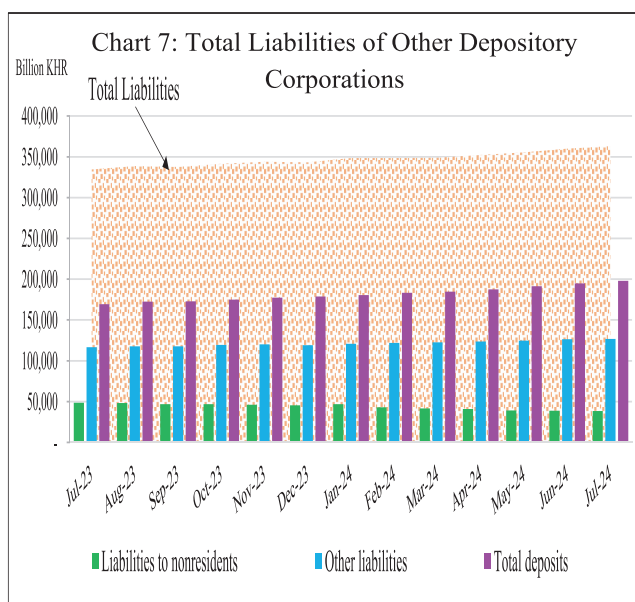
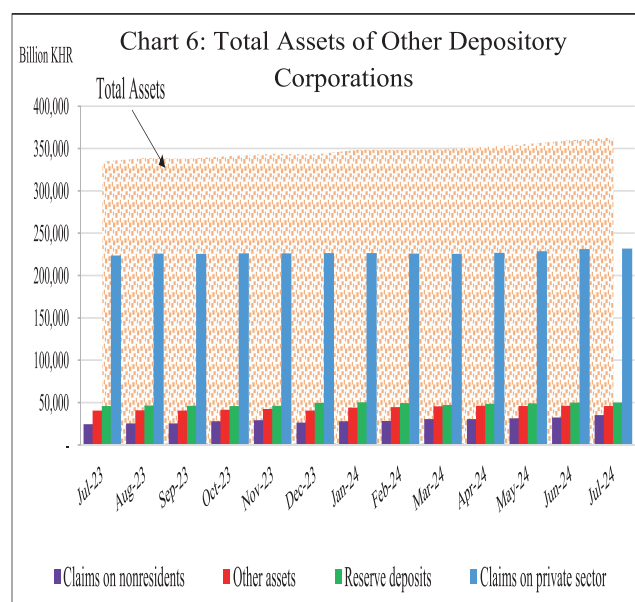
Net Foreign Assets of the Depository Corporations

Net foreign assets of the depository corporation increased to KHR 78,782.5 billion in July 2024, grew by 5.7% from June. This was due to the increase of 8.1% and 1.6% in other foreign assets and gross foreign reserve, respectively, while foreign liabilities declined by 0.8%.



Other Depository Corporations Survey

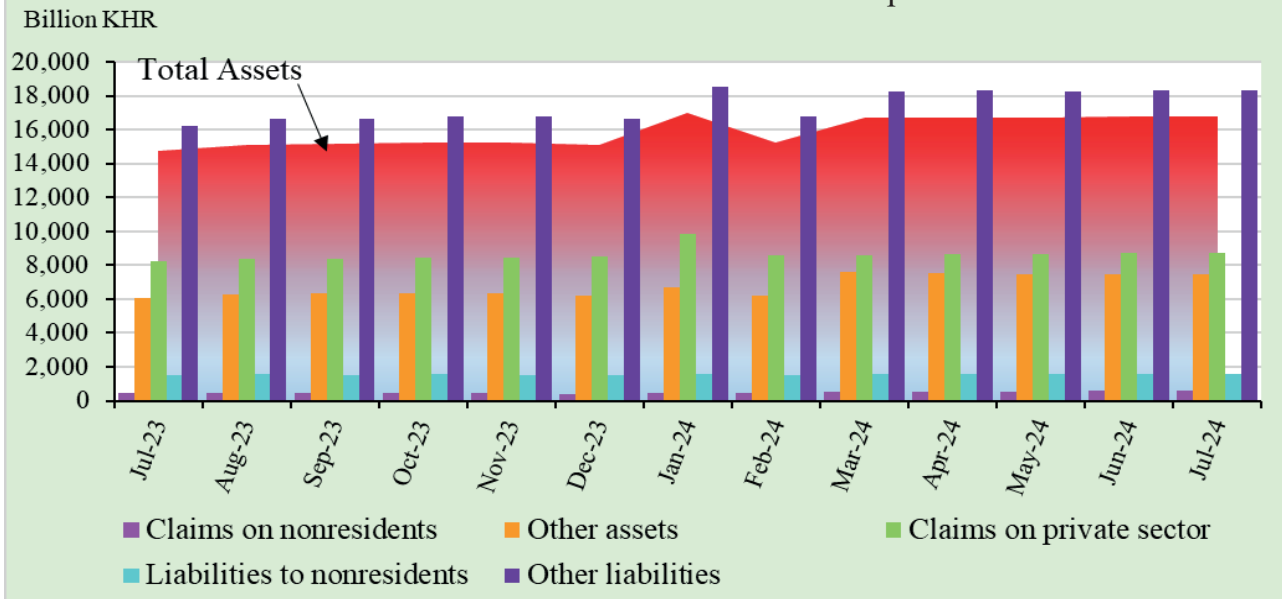
Total assets of other depository corporations (including commercial banks and microfinance deposit-taking institutions) were KHR 363,009.4 billion, rose by 0.9% in July 2024 compared to the previous month.



Other Financial Corporations Survey

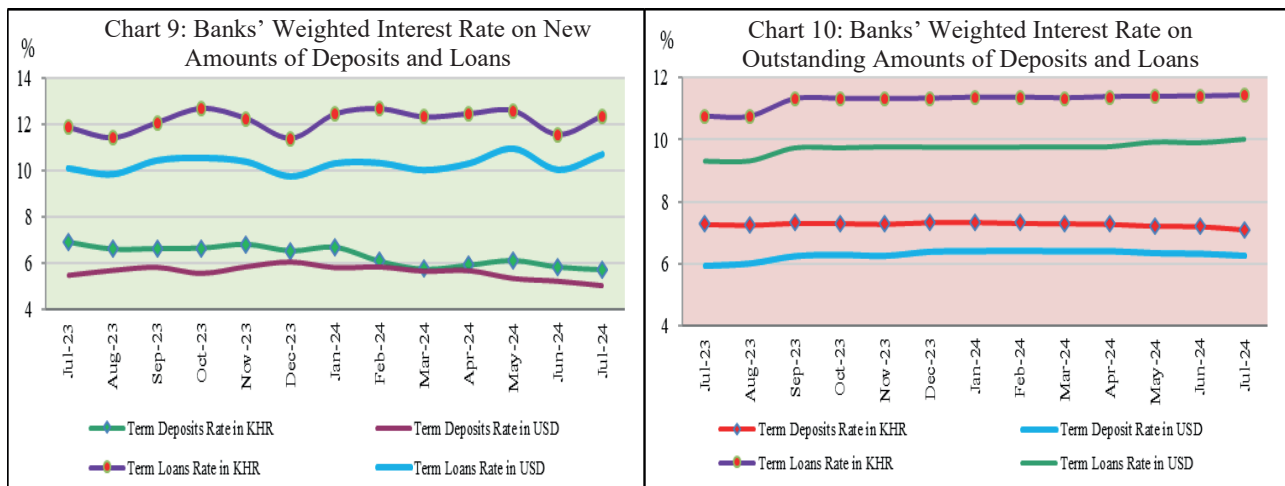
Total assets of other financial corporations (including specialized banks, MFIs, and insurance companies) were KHR 16,810.2 billion, increased by 0.4% in July 2024 compared to June.

Chart 8: Total Assets of Other Financial Corporations



Interest Rates on Deposits and Loans

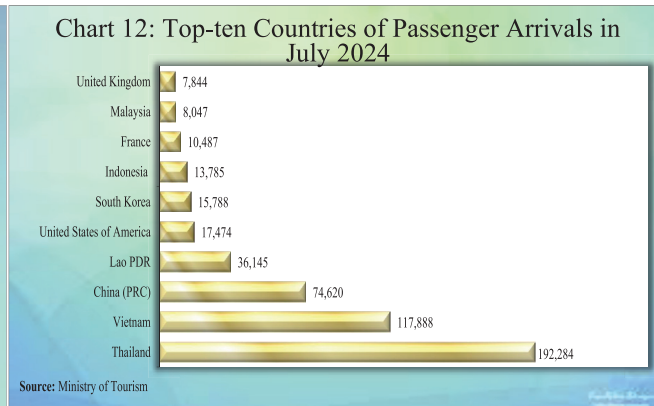
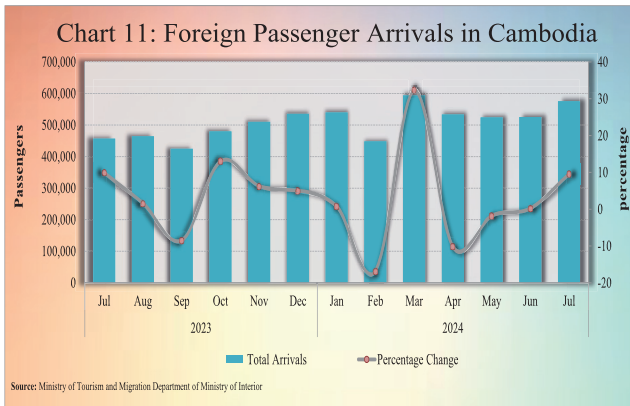
Interest rate on deposits and loans of banking sector in July 2024 showed that the (new amount) weighted average interest rate on term deposits in KHR decreased by 0.11% to 5.74%, while term deposits in USD decreased by 0.2% to 5.02%. At the same time, the weighted average interest rate on term loans in KHR increased by 0.8% to 12.36%, and term loans in USD decreased by 0.7% to 10.72%.



Foreign Tourist Arrivals

In July 2024, the total number of passenger arrivals was 575,333, increased by 9.6% after the increase of 0.2% in the previous month. The main purposes of the passenger arrivals in Cambodia were for vacation, and business and professional, which were accounted for 76.8% and 20.3% of the total, respectively.

Most of the foreign passengers were from Thailand, Vietnam, China P.R.C., Laos PDR, United States of America, South Korea, Indonesia, France, Malaysia, and United Kingdom.



International Trade in Goods

International trade in goods showed a deficit of KHR 365 billion (3.4%) in July 2024, following the deficit of KHR 1,163.3 billion (11.2%) in June.



The major components of total exports were Garment, Other Textile Products, Electrical Part, Footwear, Fish and other agricultural Products, Rubber, Wood Products, Bicycle, Rice, and Vehicle. In addition, the major components of total imports were Fabric, Oil, Vehicle, Food and Beverage, Equipment Construction, Garment, Steel, Other Electronic Equipment, Fertilizer, Medicine, and Cigarette.

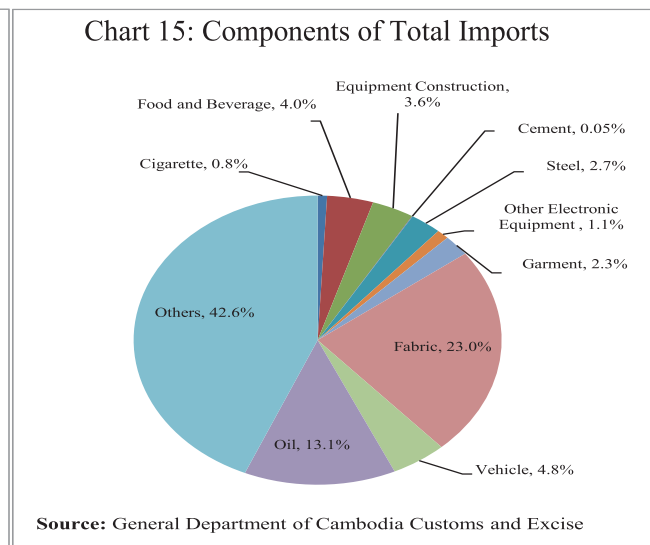
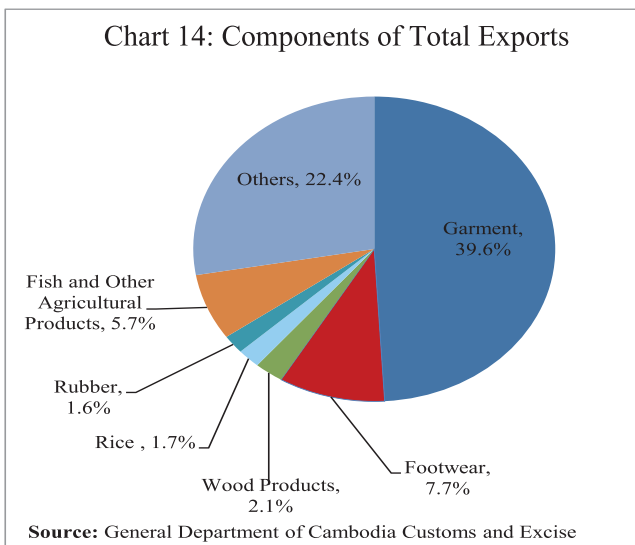


Table 1: Consumer Price Index and Inflation Rate

1. Consumer Price Index (CPI) and Component Indices (Oct-Dec. 2006 = 100)	Mar-24	Apr-24	May-24	Jun-24	Jul-24
CPI (all items)	200.03	201.93	203.55	203.56	204.32
Food and Non-Alcoholic Beverages	248.56	251.04	254.65	253.85	254.55
Alcoholic Beverages, Tobacco and Narcotics	180.48	182.73	182.92	183.41	183.40
Clothing and Footwear	180.05	181.77	184.23	185.16	186.44
Housing, Water, Electricity, Gas and other Fuels	139.70	140.35	140.94	141.15	141.59
Furnishings and Household Maintenance	162.50	163.16	163.71	163.87	164.38
Health	142.57	143.47	143.94	147.32	147.63
Transport	126.42	128.03	124.98	125.01	126.31
Communication	66.41	66.49	66.53	66.47	66.50
Recreation and Culture	130.47	131.55	132.03	132.12	133.32
Education	173.66	175.32	175.94	175.94	175.94
Restaurants	319.90	324.44	326.45	328.35	330.10
Miscellaneous Goods and Services	169.79	170.59	171.15	171.39	171.81
2. Percentage Change in the CPI and its Components					
2.1 Month on Month Change (%)					
CPI (all items)	0.45	0.95	0.80	0.01	0.37
Food and Non-Alcoholic Beverages	0.69	1.00	1.44	-0.31	0.27
Alcoholic Beverages, Tobacco and Narcotics	0.12	1.24	0.10	0.27	0.00
Clothing and Footwear	0.92	0.95	1.35	0.51	0.69
Housing, Water, Electricity, Gas and other Fuels	0.28	0.47	0.42	0.15	0.31
Furnishings and Household Maintenance	0.25	0.41	0.34	0.09	0.31
Health	0.28	0.63	0.33	2.35	0.21
Transport	-0.15	1.27	-2.38	0.02	1.04
Communication	0.00	0.12	0.06	-0.10	0.05
Recreation and Culture	0.58	0.83	0.37	0.07	0.91
Education	0.79	0.95	0.36	0.00	0.00
Restaurants	-0.21	1.42	0.62	0.58	0.53
Miscellaneous Goods and Services	0.30	0.47	0.33	0.14	0.24
2.2 Year on Year Change (%)					
CPI (all items)	0.03	0.50	1.10	0.70	0.64
Food and Non-Alcoholic Beverages	0.01	0.63	1.61	0.81	0.61
Alcoholic Beverages, Tobacco and Narcotics	-0.17	1.01	0.01	0.12	-0.06
Clothing and Footwear	1.16	1.65	2.52	2.52	2.59
Housing, Water, Electricity, Gas and other Fuels	0.32	0.03	0.09	0.00	0.03
Furnishings and Household Maintenance	0.22	0.47	0.61	0.52	0.63
Health	0.25	0.59	0.49	2.55	2.56
Transport	0.13	0.03	-0.41	-0.34	0.57
Communication	-0.05	0.01	0.02	-0.17	-0.25
Recreation and Culture	-0.08	0.39	0.35	-0.01	0.32
Education	1.58	2.55	2.92	2.52	2.12
Restaurants	-0.82	0.08	0.78	0.72	0.44
Miscellaneous Goods and Services	0.26	0.50	0.53	0.41	0.40
3. Three-month moving average CPI (All Items)					
Year on Year Change (%)	-0.25	0.08	0.54	0.77	0.81
4. Twelve-month moving average CPI (All Items)					
Year on Year Change (%)	1.58	1.53	1.58	1.64	1.53

Source: National Institute of Statistics

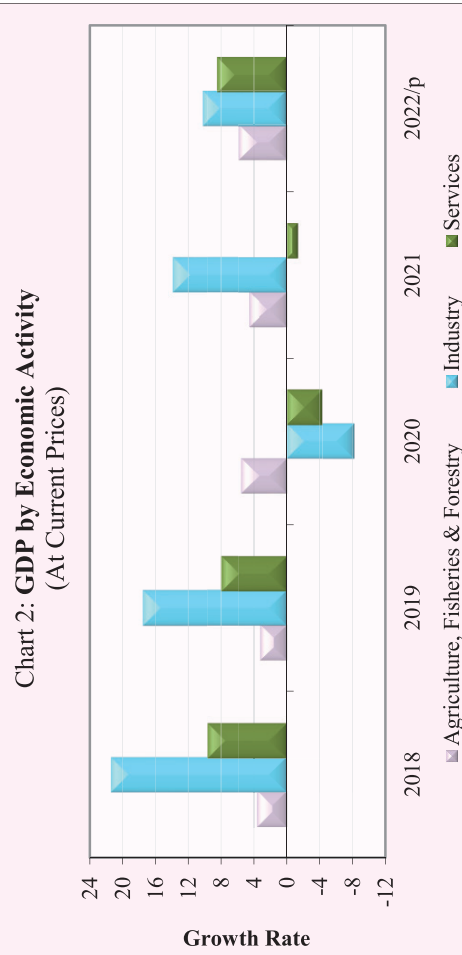
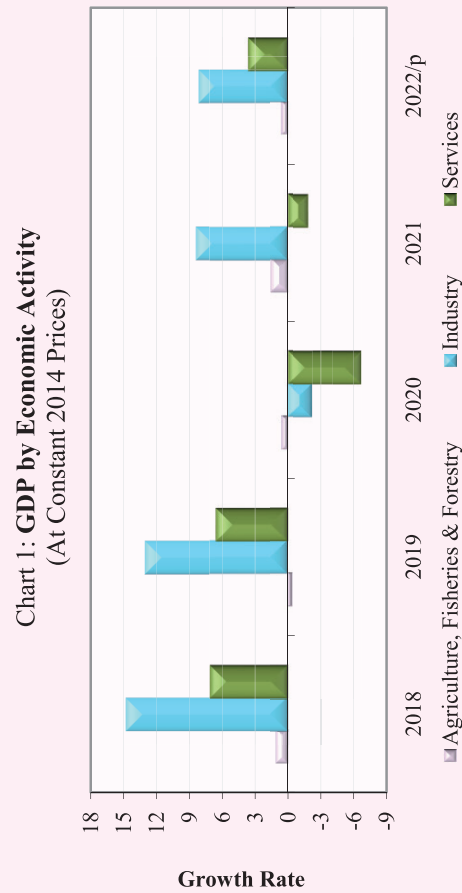
Table 2: Consumer Items Showing Price Increased in July 2024

No.	Description	Weight	Index			Percentage Change	
			Jul-23	Jun-24	Jul-24	Monthly	Yearly
1	MAINTENANCE AND REPAIRS OF PERSONAL TRANSPORT EQUIPMENT	0.265	314.20	314.20	324.04	3.1	3.1
2	GASOLINE	4.969	107.10	103.24	105.70	2.4	-1.3
3	ROOT VEGETABLES	0.456	299.85	311.43	315.59	1.3	5.2
4	DIESEL	0.144	122.52	126.61	128.16	1.2	4.6
5	FRUIT VEGETABLES	1.138	383.16	397.22	401.22	1.0	4.7
6	PULSES/LEGUMES	0.413	269.22	281.50	284.21	1.0	5.6
7	RECREATION AND CULTURE	2.912	132.90	132.12	133.32	0.9	0.3
8	LIQUID FUELS	0.099	169.35	163.39	164.86	0.9	-2.7
9	FOOD PRODUCTS NEC	1.404	258.19	260.25	262.51	0.9	1.7
10	TUBERS AND MUSHROOMS	0.439	232.70	238.81	240.85	0.9	3.5
11	CLOTHING MATERIALS	0.334	204.03	208.17	209.95	0.9	2.9
12	OTHER CLOTHING (BOTH SEXES)	0.222	149.43	156.31	157.60	0.8	5.5
13	FOOTWEAR	0.641	196.43	201.37	202.97	0.8	3.3
14	CLOTHING FOR WOMEN AND GIRLS	1.065	179.55	181.31	182.72	0.8	1.8
15	NOODLES	1.008	248.25	248.76	250.68	0.8	1.0
16	MATERIALS FOR THE MAINTENANCE AND REPAIR OF THE DWELLING	3.663	171.10	171.64	172.96	0.8	1.1
17	OTHER ARTICLES OF CLOTHING AND CLOTHING ACCESSORIES	0.059	160.93	165.55	166.80	0.8	3.6
18	TOOLS AND EQUIPMENT FOR HOUSE AND GARDEN	0.017	236.90	239.31	241.02	0.7	1.7
19	MOTOR OIL	0.062	191.47	189.86	191.16	0.7	-0.2
20	LEAF AND STALK VEGETABLES (FRESH)	2.031	250.08	256.87	258.58	0.7	3.4
21	HOUSEHOLD TEXTILES	0.015	206.69	209.82	211.18	0.7	2.2
22	SOLID FUELS	1.475	263.33	257.64	259.04	0.5	-1.6
23	PROCESSED FISH AND SEAFOOD	1.646	310.62	311.81	313.50	0.5	0.9
24	RESTAURANTS AND HOTELS	5.861	328.65	328.35	330.10	0.5	0.4
25	SEAFOOD (FRESH, CHILLED OR FROZEN)	0.229	265.92	268.23	269.60	0.5	1.4
26	CHICKEN (FRESH)	1.303	240.17	239.32	240.41	0.5	0.1
27	OTHER APPLIANCES, ARTICLES AND PRODUCTS FOR PERSONAL CARE	0.399	178.83	180.85	181.65	0.4	1.6
28	GOODS AND SERVICES FOR ROUTINE HOUSEHOLD MAINTENANCE	1.610	140.98	141.86	142.42	0.4	1.0
29	SUGAR, JAM, HONEY, CHOCOLATE AND CONFECTIONERY	1.489	170.72	175.33	175.98	0.4	3.1
30	CLOTHING FOR MEN AND BOYS	0.621	176.58	179.84	180.47	0.3	2.2
31	SPARE PARTS AND ACCESSORIES FOR PERSONAL TRANSPORT EQUIPMENT	0.084	306.47	308.53	309.57	0.3	1.0
32	TRANSPORT SERVICES	0.812	170.78	170.55	171.10	0.3	0.2
33	HAIRDRESSING SALONS AND PERSONAL GROOMING ESTABLISHMENTS	0.081	201.87	205.34	205.98	0.3	2.0
34	MEDICAL PRODUCTS, APPLIANCES AND EQUIPMENT	3.588	143.69	147.93	148.34	0.3	3.2
35	HOUSEHOLD APPLIANCES	0.397	127.25	127.08	127.42	0.3	0.1
36	OILS AND FATS	0.920	239.93	239.49	240.09	0.2	0.1
37	GLASSWARE, TABLEWARE AND HOUSEHOLD UTENSILS	0.078	156.42	155.83	156.21	0.2	-0.1
38	MISCELLANEOUS GOODS AND SERVICES	2.285	171.13	171.39	171.81	0.2	0.4
39	PERSONAL EFFECTS N.E.C	0.876	219.15	219.25	219.75	0.2	0.3
40	PROCESSED EGGS	0.079	179.77	175.79	176.17	0.2	-2.0

Source: National Institute of Statistics

Table 3: Gross Domestic Product (GDP)

	At Constant 2014 Prices					At Current Prices				
	2018	2019	2020	2021	2022/p	2018	2019	2020	2021	2022/p
GDP in Billion KHR	121,026	130,632	125,987	129,880	136,508	134,280	148,985	142,503	150,793	164,059
GDP in Million USD	29,772	32,322	31,240	31,964	33,446	32,931	36,344	34,835	36,726	39,491
GDP % Growth Rate	8.8	7.9	-3.6	3.1	5.1	12.9	11.0	-4.4	5.8	8.8
GDP % Growth Rate, by Economic Activity										
Agriculture, Fisheries & Forestry	1.1	-0.4	0.6	1.5	0.6	3.7	3.2	5.5	4.6	5.8
Industry	14.8	13.0	-2.2	8.4	8.2	21.4	17.5	-8.2	13.9	10.3
Services	7.1	6.6	-6.7	-1.8	3.6	9.7	8.0	-4.3	-1.4	8.5
GDP Per Capita in Million KHR	7.6	8.1	7.7	7.8	8.1	8.5	9.3	8.7	9.1	9.7
GDP Per Capita in USD	1,882	2,010	1,912	1,926	1,986	2,081	2,260	2,132	2,213	2,345



p/: preliminary estimates

Source: National Institute of Statistics

Table 4: Residential Property Price Index (RPPI)

	May-23	Jun-23	Jul-23	Aug-23	Sep-23	Oct-23	Nov-23	Dec-23	Jan-24	Feb-24	Mar-24	Apr-24	May-24	Jun-24	Jul-24	
Residential Property Price Index (2020 =100)																
Overall RPPI	115.6	116.1	115.0	114.8	114.1	113.1	111.9	111.5	112.0	112.0	111.0	110.7	110.8	111.6	112.8	
RPPI in Phnom Penh	117.5	117.5	115.9	115.9	115.2	113.8	112.2	111.4	112.3	112.7	111.8	111.5	111.2	112.7	114.1	
RPPI in Other Provinces	105.7	109.3	110.4	108.9	108.4	109.7	110.4	111.5	110.4	109.3	107.7	107.6	109.0	107.2	107.3	
Month on Month Change (%)																
Overall RPPI	1.3	0.5	-1.0	-0.2	-0.6	-0.8	-1.1	-0.4	0.5	0.0	-0.9	-0.3	0.1	0.7	1.1	
RPPI in Phnom Penh	1.1	0.0	-1.3	0.0	-0.7	-1.2	-1.4	-0.7	0.8	0.3	-0.7	-0.3	-0.2	1.3	1.3	
RPPI in Other Provinces	2.5	3.3	1.1	-1.4	-0.4	1.2	0.7	0.9	-0.9	-1.0	-1.5	-0.1	1.4	-1.7	0.1	
Year on Year Change (%)																
Overall RPPI	6.4	6.5	2.8	1.1	-0.4	-1.7	-2.5	-2.9	-1.6	-1.0	-1.7	-2.9	-4.1	-3.9	-2.0	
RPPI in Phnom Penh	6.9	6.4	2.0	0.5	-1.1	-2.6	-3.3	-3.9	-2.1	-1.7	-2.5	-4.1	-5.4	-4.1	-1.5	
RPPI in Other Provinces	5.3	8.9	9.2	6.6	5.8	5.5	3.2	3.6	2.1	4.2	3.4	4.3	3.1	-1.9	-2.9	

Note:

The methodology used to generate the RPPI index is the time-

which complies with the IMF's RPPI Practical Compilation Guide published in 2020 (<https://www.imf.org/en/Data/Statistics/RPPI-guide>).

*Revised data

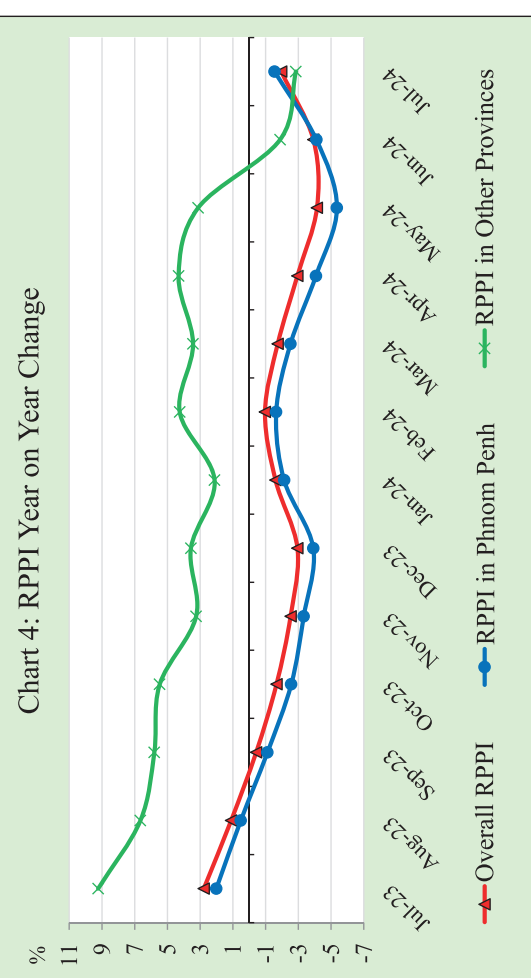
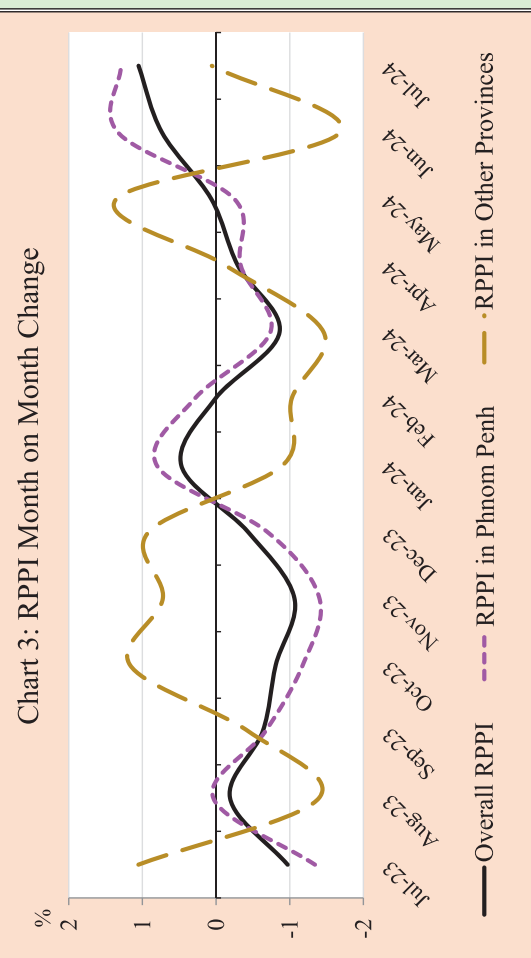
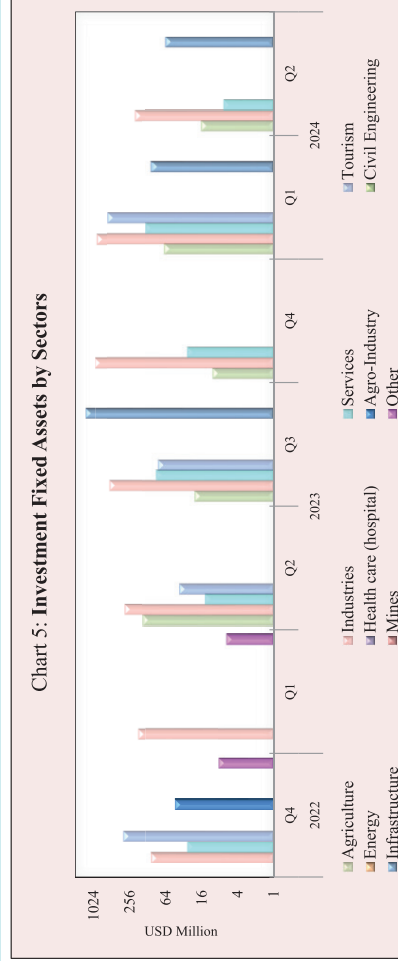
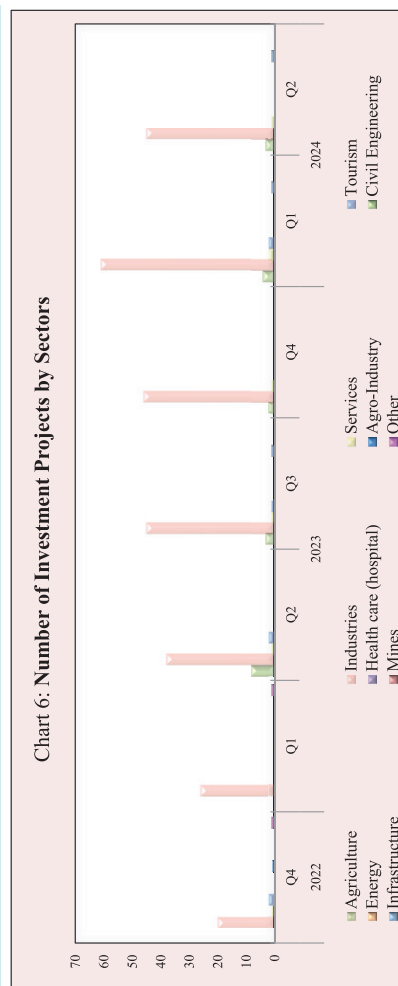


Table 5: Investment Projects Approved by Sectors

(In Million USD)

Sector	Agriculture		Industries		Services		Tourism		Energy		Health care (hospital)		Agro-Industry		Civil Engineering		Infrastructure		Mines		Other		Total	
	Projects	Fixed Assets	Projects	Fixed Assets	Projects	Fixed Assets	Projects	Fixed Assets	Projects	Fixed Assets	Projects	Fixed Assets	Projects	Fixed Assets	Projects	Fixed Assets	Projects	Fixed Assets	Projects	Fixed Assets	Projects	Fixed Assets	Projects	Fixed Assets
2018																								
Total	13	444.2	115	984.0	10	2,869.9	12	1,577.8	-	-	-	-	-	-	-	-	-	-	-	-	-	-	150	5,875.8
2019																								
Total	5	68.7	164	859.4	10	1028.3	17	6,051.6	3	158.6	-	-	-	-	-	-	-	-	-	-	-	-	199	8,166.6
2020																								
Total	7	105.6	130	1030.9	5	799.8	6	3850.5	6	678.7	-	-	-	-	-	-	-	-	-	-	-	-	154	6,465.5
2021																								
Total	5	60.3	88	980.6	2	9.9	2	127.8	5	509.7	2	18.8	-	-	-	-	-	-	-	-	3	11.4	107	1,718.7
2022																								
Q3	-	-	24	122.9	-	-	2	35.3	-	-	3	64.0	1	7.2	-	-	-	-	1	13.0	1	23.4	32	265.8
Q4	-	-	20	110.8	1	27.5	2	332.4	-	-	-	-	1	44.3	-	-	-	-	-	-	1	8.1	25	523.0
Total	4	79.9	99	580.9	3	50.2	5	496.6	1	389.4	4	79.0	4	60.5	2	75.8	1	1,300.0	1	13.0	8	104.1	132	3,229.6
2023																								
Q1	-	-	26	186.5	-	-	-	-	-	-	-	-	-	-	-	-	-	-	-	-	1	6.0	27	192.6
Q2	8	151.8	38	313.1	1	14.0	2	37.5	-	-	-	-	-	-	-	-	-	-	-	-	-	-	49	516.3
Q3	3	20.8	45	560.1	1	91.2	1	84.5	-	-	-	-	-	-	-	-	1	1,376.0	-	-	-	-	51	2,132.6
Q4	2	10.5	46	932.4	1	27.7	-	-	-	-	-	-	-	-	-	-	-	-	-	-	-	-	49.0	970.6
Total	13	183.0	155	1,992.1	3	132.9	3	122.0	-	-	-	-	1	1,376.0	-	-	1	1,376.0	-	-	1	6.0	176	3,812.1
2024																								
Q1	4	66.6	61	859.1	2	137.2	2	588.9	-	-	-	-	1	108.8	-	-	-	-	-	-	-	-	70	1,171.7
Q2	3	16.2	45	210.0	1	6.9	-	-	-	-	-	-	1	65.5	-	-	1	65.5	-	-	-	-	50	298.7
Total	7	82.9	106.0	1,069.1	3	144.1	2	588.9	-	-	-	-	2	174.3	-	-	2	174.3	-	-	-	-	120	1,470.4



Source: Council for the Development of Cambodia (Cambodian Investment Board)

* Revised data

Table 7: Daily Exchange Rate in July 2024

(KHR/USD)

Day	Parallel Market Rate			Official Rate	Daily Change*	
	Purchase	Sale	Midpoint		Spread	% Change
1	4,111	4,121	4,116	4,112	2.0	0.0
2	4,115	4,127	4,121	4,113	4.0	0.1
3	4,113	4,125	4,119	4,118	-2.0	0.0
4	4,113	4,124	4,119	4,118	0.0	0.0
5	4,113	4,125	4,119	4,117	0.0	0.0
6	4,113	4,125	4,119	4,117	0.0	0.0
7	4,113	4,125	4,119	4,117	0.0	0.0
8	4,110	4,121	4,116	4,119	-3.0	-0.1
9	4,107	4,117	4,112	4,116	-3.0	-0.1
10	4,105	4,115	4,110	4,110	-2.0	0.0
11	4,101	4,112	4,107	4,110	-4.0	-0.1
12	4,103	4,113	4,108	4,106	2.0	0.0
13	4,103	4,113	4,108	4,106	0.0	0.0
14	4,103	4,113	4,108	4,106	0.0	0.0
15	4,103	4,114	4,109	4,106	0.0	0.0
16	4,104	4,114	4,109	4,106	1.0	0.0
17	4,105	4,114	4,110	4,107	1.0	0.0
18	4,104	4,114	4,109	4,106	-1.0	0.0
19	4,105	4,114	4,110	4,109	1.0	0.0
20	4,105	4,114	4,110	4,109	0.0	0.0
21	4,105	4,114	4,110	4,109	0.0	0.0
22	4,106	4,116	4,111	4,109	1.0	0.0
23	4,105	4,115	4,110	4,108	-1.0	0.0
24	4,103	4,113	4,108	4,107	-2.0	0.0
25	4,101	4,111	4,106	4,105	-2.0	0.0
26	4,101	4,111	4,106	4,102	0.0	0.0
27	4,101	4,111	4,106	4,102	0.0	0.0
28	4,101	4,111	4,106	4,102	0.0	0.0
29	4,104	4,114	4,109	4,106	3.0	0.1
30	4,105	4,115	4,110	4,107	1.0	0.0
31	4,106	4,115	4,111	4,108	1.0	0.0
Average Rate	4,106	4,116	4,111	4,109	-0.1	0.0

* Spread of Daily Purchasing Market Rate

Table 8: Monthly Exchange Rate

(KHR/USD, End-Period)

Month	Market Rate				Official Rate
	Purchase	Monthly %Change	Sale	Midpoint	
Dec-15	4,048	0.10	4,055	4,052	4,050
Dec-16	4,039	0.17	4,050	4,045	4,037
Dec-17	4,037	0.07	4,046	4,042	4,037
Dec-18	4,027	-0.27	4,039	4,033	4,018
Dec-19	4,079	0.12	4,089	4,084	4,075
Dec-20	4,069	0.00	4,084	4,077	4,045
Dec-21	4,109	0.17	4,118	4,114	4,074
2022					
Sep	4,117	0.32	4,126	4,122	4,119
Oct	4,135	0.44	4,145	4,140	4,141
Nov	4,110	-0.60	4,120	4,115	4,122
Dec	4,113	0.07	4,123	4,118	4,117
2023					
Jan	4,102	-0.27	4,113	4,108	4,104
Feb	4,050	-1.27	4,063	4,057	4,043
Mar	4,051	0.02	4,062	4,057	4,054
Apr	4,114	1.56	4,126	4,120	4,115
May	4,116	0.05	4,126	4,121	4,116
Jun	4,126	0.24	4,136	4,131	4,130
Jul	4,124	-0.05	4,134	4,129	4,130
Aug	4,151	0.65	4,161	4,156	4,158
Sep	4,119	-0.77	4,130	4,125	4,122
Oct	4,129	0.24	4,137	4,133	4,135
Nov	4,113	-0.39	4,123	4,118	4,115
Dec	4,080	-0.80	4,090	4,085	4,085
2024					
Jan	4,080	0.00	4,091	4,086	4,083
Feb	4,064	-0.39	4,073	4,069	4,069
Mar	4,040	-0.59	4,049	4,045	4,041
Apr	4,063	0.57	4,074	4,069	4,064
May	4,093	0.74	4,107	4,100	4,093
Jun	4,109	0.39	4,120	4,114	4,110
Jul	4,106	-0.07	4,115	4,111	4,108

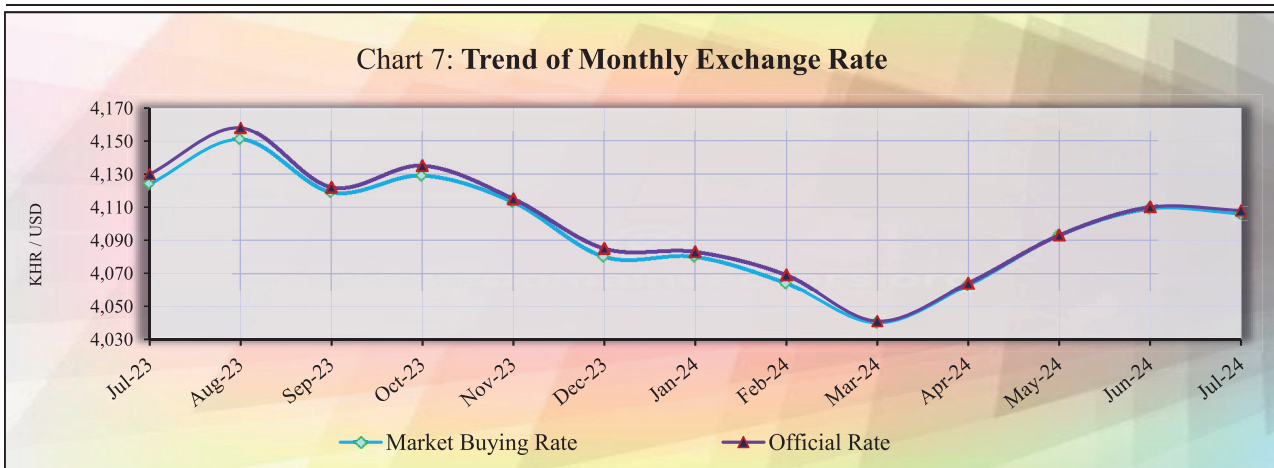


Table 9: The Value of KHR Against Other Currencies

(Official Buying Rate, End-Period)

Unit	SDR		US Dollar		Euro		Japanese Yen		British Pounds		Indonesian Rupiah		Malaysian Ringgit		Philippines Peso		Singapore Dollar		Thai Baht		Vietnamese Dong		China Yuan	
	1	1	1	1	1	1	100	100	1	1	1000	1	1	100	100	1	1	1	1	1	1000	1	1	
Dec-18	5,588	4,018	4,597	3,641	5,098	277	969	7,653	2,942	124	174	584												
Dec-19	5,635	4,075	4,565	3,743	5,344	293	994	8,050	3,023	136	176	583												
Dec-20	5,826	4,045	4,962	3,908	5,465	287	1,000	8,423	3,049	135	175	619												
Dec-21	5,702	4,074	4,614	3,541	5,499	286	977	7,992	3,015	122	179	639												
2022																								
Aug	5,356	4,107	4,117	2,961	4,789	277	918	7,308	2,938	113	175	595												
Sep	5,255	4,119	4,049	2,853	4,605	270	889	6,985	2,878	108	173	578												
Oct	5,323	4,141	4,124	2,805	4,802	266	877	7,144	2,935	109	167	571												
Nov	5,417	4,122	4,254	2,971	4,923	262	915	7,288	2,997	116	167	576												
Dec	5,479	4,117	4,378	3,079	4,956	263	931	7,392	3,053	119	174	591												
2023																								
Jan	5,545	4,104	4,468	3,155	5,083	274	967	7,524	3,125	125	175	608												
Feb	5,368	4,043	4,267	2,969	4,837	265	903	7,283	2,995	115	170	581												
Mar	5,454	4,054	4,409	3,062	5,010	269	918	7,452	3,054	118	173	590												
Apr	5,561	4,115	4,547	3,074	5,129	280	923	7,385	3,081	121	175	594												
May	5,481	4,116	4,405	2,936	5,092	275	894	7,312	3,041	118	175	581												
Jun	5,514	4,130	4,508	2,862	5,224	276	884	7,470	3,052	116	175	570												
Jul	5,571	4,130	4,527	2,956	5,291	274	907	7,526	3,098	121	174	577												
Aug	5,513	4,158	4,518	2,840	5,253	273	895	7,330	3,071	118	172	570												
Sep	5,405	4,122	4,336	2,759	5,015	266	876	7,235	3,006	112	169	565												
Oct	5,418	4,135	4,363	2,764	5,002	260	868	7,261	3,023	115	168	565												
Nov	5,487	4,115	4,523	2,793	5,226	267	885	7,431	3,091	118	170	578												
Dec	5,481	4,085	4,541	2,899	5,231	265	887	7,363	3,102	120	168	575												
2024																								
Jan	5,427	4,083	4,419	2,769	5,181	259	864	7,239	3,048	116	167	569												
Feb	5,406	4,069	4,401	2,699	5,142	260	854	7,240	3,022	113	165	565												
Mar	5,354	4,041	4,361	2,670	5,094	255	854	7,190	2,994	111	163	559												
Apr	5,354	4,064	4,349	2,610	5,085	250	852	7,047	2,987	110	160	561												
May	5,417	4,093	4,425	2,606	5,199	252	870	6,981	3,028	111	161	565												
June	5,402	4,110	4,391	2,559	5,191	251	871	6,996	3,028	111	161	565												
July	5,447	4,108	4,448	2,654	5,282	252	890	7,008	3,057	114	162	567												
Monthly % Change	0.83	-0.05	1.30	3.71	1.75	0.40	2.18	0.17	0.96	2.70	0.62	0.35												

Table 10: Deposit Money Bank's Interest Rates on Deposits and Loans in KHR and USD

	Dec-19	Dec-20	Dec-21	Dec-22	Jan-23	Feb-23	Mar-23	Apr-23	May-23	Jun-23	Jul-23	Aug-23	Sep-23	Oct-23	Nov-23	Dec-23	Jan-24	Feb-24	Mar-24	Apr-24	May-24	Jun-24	Jul-24	
<i>Weighted Average Rate on New Amount</i>																								
Interest Rate on Deposits and Loans in KHR																								
Deposit																								
Demand Deposits	0.12	0.03	0.35	0.29	0.19	0.25	0.18	0.19	0.16	0.20	0.18	0.18	0.25	0.24	0.24	0.19	0.18	0.16	0.28	0.17	0.25	0.37	0.37	
Saving Deposits	0.60	0.60	1.05	0.85	0.85	0.88	0.89	0.88	0.87	0.88	0.89	0.87	0.89	0.89	0.91	0.83	0.92	0.83	0.80	0.81	0.81	0.81	0.88	
Term Deposits	4.10	5.34	4.79	6.12	6.29	6.70	7.45	6.64	7.00	6.67	6.91	6.61	6.64	6.65	6.82	6.54	6.69	6.09	5.76	5.93	6.13	5.85	5.74	
Other Deposits	2.47	3.49	2.20	7.16	6.32	5.06	7.10	6.72	4.77	6.99	6.52	6.10	6.28	6.23	6.51	7.09	7.10	7.18	6.96	7.22	6.91	6.28	6.65	
Overdraft	7.72	7.14	6.32	7.38	7.99	8.49	9.41	9.42	9.06	9.46	9.48	10.66	10.49	10.48	8.89	7.61	8.90	8.71	8.86	9.13	7.13	9.98	11.35	
Credit Card	16.73	14.21	13.84	15.66	12.72	14.72	13.68	15.73	13.62	13.61	14.01	14.97	13.24	14.34	14.02	16.20	14.52	12.80	12.05	12.70	9.85	13.07	13.41	
Term Loans	9.13	10.15	10.18	10.88	12.03	12.61	12.28	11.82	12.35	11.86	11.87	11.42	12.08	12.69	12.25	11.40	12.45	12.67	12.32	12.45	12.58	11.56	12.36	
Other Loans	5.59	6.47	7.00	5.24	7.54	7.41	7.67	7.20	7.60	6.89	6.65	6.88	6.71	7.05	7.52	4.93	6.63	6.94	6.93	6.28	6.19	7.32	8.00	
Interest Rate on Deposits and Loans in USD																								
Deposit																								
Demand Deposits	0.20	0.10	0.18	0.32	0.29	0.33	0.36	0.33	0.36	0.37	0.38	0.33	0.43	0.42	0.43	0.26	0.37	0.35	0.65	0.35	0.43	0.48	0.48	
Saving Deposits	0.24	0.17	0.21	0.30	0.28	0.28	0.28	0.30	0.31	0.41	0.30	0.26	0.30	0.32	0.28	0.42	0.35	0.36	0.36	0.35	0.35	0.27	0.27	
Term Deposits	3.44	3.24	3.98	5.59	5.28	5.54	5.53	5.42	5.63	5.75	5.49	5.71	5.84	5.57	5.87	6.08	5.83	5.86	5.67	5.70	5.34	5.22	5.02	
Other Deposits	2.47	0.80	3.93	6.57	5.75	3.08	6.85	6.39	6.83	7.14	6.19	6.64	7.42	6.46	7.57	6.20	6.88	7.48	7.42	7.04	7.05	6.95	6.83	
Loans																								
Overdraft	7.57	6.15	5.97	7.68	7.39	7.71	7.39	7.45	7.81	7.93	7.53	8.32	8.08	8.25	8.30	8.13	8.30	8.47	8.04	7.71	6.55	8.13	7.97	
Credit Card	11.97	17.02	17.27	17.45	18.02	17.51	17.84	17.91	17.99	17.82	17.70	17.51	17.22	18.14	17.72	18.25	17.05	16.90 ⁷	17.33	17.31	16.67	16.91	16.59	
Term Loans	8.72	9.11	9.09	9.10	9.88	10.19	9.70	9.83	9.61	9.46	10.13	9.88	10.46	10.57	10.41	9.78	10.34	10.35	10.05	10.33	10.96	10.06	10.72	
Other Loans	6.50	6.01	5.93	6.67	6.78	6.75	6.84	7.28	7.36	7.41	7.22	7.28	7.41	7.51	7.69	7.23	7.55	7.66	7.64	7.58	7.69	7.69	7.44	
<i>Weighted Average Rate on Outstanding Amount</i>																								
Interest Rate on Deposits and Loans in KHR																								
Deposit																								
Demand Deposits	0.22	0.19	0.47	0.54	0.42	0.47	0.37	0.43	0.42	0.40	0.44	0.47	0.51	0.51	0.54	0.57	0.54	0.59	0.43	0.48	0.53	0.49	0.55	
Saving Deposits	0.91	0.82	1.02	1.12	1.18	1.16	1.12	1.09	1.18	1.18	1.18	1.18	1.23	1.23	1.27	1.24	1.25	1.15	1.15	1.18	1.21	1.26	1.30	
Term Deposits	5.42	5.66	5.85	6.63	6.71	6.84	7.03	7.10	7.20	7.21	7.28	7.25	7.32	7.31	7.28	7.34	7.35	7.32	7.30	7.28	7.21	7.20	7.08	
Other Deposits	2.81	3.20	2.20	2.23	1.88	1.66	1.63	1.71	1.74	2.32	2.39	5.97	6.26	6.30	6.56	6.67	6.38	6.90	6.72	6.65	6.78	6.44	6.44	
Loans																								
Overdraft	8.08	7.93	8.26	8.48	8.47	8.42	8.41	8.44	8.45	8.40	8.44	8.46	8.48	8.51	8.09	8.14	8.14	8.15	8.13	8.08	8.12	8.27	8.41	
Credit Card	17.29	16.25	15.30	14.26	14.07	14.13	14.06	13.94	14.16	14.05	14.10	13.95	13.78	13.73	13.82	13.85	13.80	13.78	13.71	13.63	13.42	13.39	13.47	
Term Loans	10.62	10.54	10.52	10.62	10.65	10.67	10.68	10.69	10.72	10.76	10.75	10.75	11.30	11.32	11.31	11.32	11.36	11.36	11.33	11.38	11.39	11.42	11.42	
Other Loans	6.28	6.73	6.67	6.46	6.64	6.53	6.61	6.63	6.57	6.58	6.47	6.70	6.44	6.44	6.39	6.06	6.33	6.30	6.34	6.31	6.31	6.25	6.30	
Interest Rate on Deposits and Loans in USD																								
Deposit																								
Demand Deposits	0.35	0.41	0.40	0.60	0.70	0.76	0.77	0.72	0.79	0.75	0.79	0.81	0.79	0.81	0.85	0.88	0.89	0.96	1.00	0.99	1.04	1.03	1.07	
Saving Deposits	0.43	0.41	0.47	0.65	0.66	0.66	0.67	0.67	0.72	0.71	0.75	0.71	0.77	0.79	0.78	0.78	0.80	0.73	0.75	0.76	0.81	0.84	0.84	
Term Deposits	4.34	4.40	4.53	5.26	5.34	5.46	5.58	5.65	5.75	5.85	5.93	6.01	6.24	6.28	6.25	6.38	6.40	6.41	6.40	6.40	6.34	6.32	6.25	
Other Deposits	2.43	0.94	3.28	2.76	2.45	2.47	2.49	2.28	2.47	2.13	2.11	4.56	4.62	4.70	4.78	3.90	4.72	4.59	4.43	4.94	5.00	3.80	4.26	
Loans																								
Overdraft	7.82	7.71	7.47	7.38	7.44	7.44	7.45	7.45	7.49	7.51	7.53	7.57	7.83	7.67	7.69	7.71	7.68	7.71	7.72	7.71	7.62	7.66	7.64	
Credit Card	15.53	17.11	16.62	16.13	16.33	16.16	16.08	16.33	16.12	16.15	16.15	16.03	15.99	15.95	16.04	16.06	16.07	15.99	15.85	16.01	15.88	16.09	15.97	
Term Loans	9.51	9.36	9.18	9.22	9.24	9.22	9.25	9.26	9.27	9.28	9.30	9.31	9.73	9.73	9.76	9.75	9.76	9.76	9.76	9.77	9.91	9.89	10.01	
Other Loans	7.19	6.93	6.83	6.86	6.92	7.03	7.12	7.13	7.15	7.08	7.31	7.33	7.38	7.40	7.44	7.47	7.46	7.45	8.27	7.49	7.43	7.56	7.54	

Including Commercial Banks and Specialized Banks

*Revised Data

Table 11: Central Bank Survey*

(In Billion KHR)

	Mar-24	Apr-24	May-24	Jun-24	Jul-24
Net Foreign Assets	77,976.3	79,293.3	78,635.6	80,776.7	82,050.5
Claims on Nonresidents	79,333.1	80,650.0	80,008.3	82,145.6	83,430.7
Liabilities to Nonresidents	-1,356.8	-1,356.8	-1,372.7	-1,368.9	-1,380.2
Claims on Other Depository Corporations	1,179.5	1,258.8	1,177.7	1,011.9	869.0
Net Claims on Central Government	-10,991.2	-11,015.6	-11,130.9	-11,267.5	-11,181.1
Claims on Central Government	0.0	0.0	0.0	0.0	0.0
Liabilities to Central Government	-10,991.2	-11,015.6	-11,130.9	-11,267.5	-11,181.1
Claims on Other Sectors	47.5	48.2	54.5	55.6	66.4
Claims on Other Financial Corporations	0.0	0.0	0.0	0.0	0.0
Claims on State and Local Government	0.0	0.0	0.0	0.0	0.0
Claims on Public Nonfinancial Corporations	0.0	0.0	0.0	0.0	0.0
Claims on Private Sector	47.5	48.2	54.5	55.6	66.4
Monetary Base	57,480.4	57,797.3	56,319.1	56,988.6	57,918.7
Currency in Circulation	18,516.0	18,567.9	17,436.9	17,205.1	17,111.5
Liabilities to Other Depository Corporations	38,911.6	39,174.0	38,844.1	39,743.2	40,762.3
Liabilities to Other Sectors	52.8	55.4	38.1	40.4	44.8
Other Liabilities to Other Depository Corporations	9,557.3	10,267.3	10,816.9	10,723.7	10,017.6
Deposits And Securities Other Than Shares Excl. Form Monetary Base	49.1	49.2	49.4	52.6	51.1
Deposits Included in Broad Money	0.0	0.0	0.0	0.0	0.0
Securities Other Than Shares Incl. in Broad Money	0.0	0.0	0.0	0.0	0.0
Deposits Excl. From Broad Money	49.1	49.2	49.4	52.6	51.1
Securities Other Than Shares Excl. From Broad Money	0.0	0.0	0.0	0.0	0.0
Loans	0.0	0.0	0.0	0.0	0.0
Financial Derivatives	0.0	0.0	0.0	0.0	0.0
Shares and Other Equity	4,547.8	4,889.4	4,938.9	5,955.1	6,889.4
Other Items (Net)	-3,422.5	-3,418.5	-3,387.4	-3,143.3	-3,072.1
<i>IFS Vertical Check</i>	<i>0.0</i>	<i>0.0</i>	<i>0.0</i>	<i>0.0</i>	<i>0.0</i>

* Included only central bank

** Revised Data

Table 12: Other Depository Corporations Survey*

(In Billion KHR)

	Mar-24	Apr-24	May-24	Jun-24	Jul-24
Net Foreign Assets	-11,426.3	-10,458.8	-7,695.0	-6,254.3	-3,268.0
Claims on Nonresidents	30,321.9	30,460.6	31,541.7	32,488.6	35,130.0
Liabilities to Nonresidents	-41,748.2	-40,919.4	-39,236.6	-38,743.0	-38,398.0
Claims On Central Bank	49,831.3	51,262.7	51,649.4	52,284.5	52,379.5
Currency	2,484.7	2,695.1	2,418.7	2,393.4	2,387.5
Reserve Deposits and Securities Other Than Shares	47,297.5	48,521.8	49,188.6	49,853.2	49,957.7
Other Claims on Central Bank	49.1	45.8	42.1	37.9	34.2
Net Claims on Central Government	-10,144.6	-9,915.5	-10,556.4	-10,729.3	-10,721.1
Claims on Central Government	436.1	455.6	491.7	530.5	514.6
Liabilities to Central Government	-10,580.7	-10,371.1	-11,048.1	-11,259.7	-11,235.6
Claims on Other Sectors	229,589.5	230,802.3	232,565.7	235,218.8	235,775.7
Claims on Other Financial Corporations	3,950.2	3,940.9	3,882.7	3,853.2	3,833.1
Claims on State and Local Government	0.0	0.0	0.0	0.0	0.0
Claims on Public Nonfinancial Corporations	27.4	20.6	13.5	1.8	46.5
Claims on Private Sector	225,611.9	226,840.8	228,669.5	231,363.8	231,896.0
Liabilities to Central Bank	3,665.1	3,736.6	3,895.0	3,896.9	3,816.2
Transferable Deposits Incl. in Broad Money	28,585.2	28,341.4	28,797.0	29,840.0	29,948.6
Other Deposits Incl. in Broad Money	155,768.6	159,000.2	162,335.1	164,801.6	167,743.8
Securities Other Than Shares Incl. in Broad Money	0.0	0.0	0.0	0.0	0.0
Deposits Excl. From Broad Money	196.3	279.9	189.7	166.4	221.8
Securities Other Than Shares Excl. From Broad Money	0.0	0.0	0.0	0.0	0.0
Loans	2,100.7	2,238.4	2,227.5	2,236.1	2,390.1
Financial Derivatives	0.0	0.0	0.0	0.0	0.0
Shares and Other Equity	61,059.8	61,326.8	61,784.5	61,995.9	62,237.0
Other Items (Net)	6,474.2	6,767.4	6,735.0	7,582.8	7,808.6
<i>IFS Vertical Check</i>	<i>0.0</i>	<i>0.0</i>	<i>0.0</i>	<i>0.0</i>	<i>0.0</i>

* Included commercial banks and MDIs

** Revised Data

Table 13: Depository Corporations Survey*

(In Billion KHR)

	Mar-24	Apr-24	May-24	Jun-24	Jul-24
Net Foreign Assets	66,550.1	68,834.5	70,940.7	74,522.4	78,782.5
Claims on Nonresidents	109,655.1	111,110.7	111,550.0	114,634.2	118,560.7
Liabilities to Nonresidents	-43,105.0	-42,276.2	-40,609.3	-40,111.8	-39,778.2
Domestic Claims	208,501.2	209,919.4	210,932.9	213,277.6	213,939.8
Net Claims on Central Government	-21,135.8	-20,931.1	-21,687.3	-21,996.7	-21,902.2
Claims on Central Government	436.1	455.6	491.7	530.5	514.6
Liabilities to Central Government	-21,571.9	-21,386.7	-22,179.1	-22,527.2	-22,416.8
Claims on Other Sectors	229,637.0	230,850.6	232,620.2	235,274.3	235,842.0
Claims on Other Financial Corporations	3,950.2	3,940.9	3,882.7	3,853.2	3,833.1
Claims on State and Local Government	0.0	0.0	0.0	0.0	0.0
Claims on Public Nonfinancial Corporations	27.4	20.6	13.5	1.8	46.5
Claims on Private Sector	225,659.4	226,889.1	228,724.0	231,419.4	231,962.4
Broad Money Liabilities (M2)	200,437.9	203,269.7	206,188.4	209,493.7	212,461.2
Currency Outside Depository Corporations	16,031.3	15,872.8	15,018.2	14,811.7	14,724.0
Transferable Deposits	28,620.0	28,378.8	28,817.0	29,862.3	29,975.4
Other Deposits	155,786.6	159,018.1	162,353.1	164,819.6	167,761.8
Securities Other Than Shares	0.0	0.0	0.0	0.0	0.0
<i>of which Foreign Currency (of M2)</i>	<i>167,656.6</i>	<i>170,282.9</i>	<i>173,590.0</i>	<i>176,368.2</i>	<i>178,992.4</i>
Deposits Excl. From Broad Money	245.3	329.2	239.1	219.0	272.9
Securities Other Than Shares Excl. From Broad Money	0.0	0.0	0.0	0.0	0.0
Loans	2,100.7	2,238.4	2,227.5	2,236.1	2,390.1
Financial Derivative	0.0	0.0	0.0	0.0	0.0
Shares and Other Equity	65,607.6	66,216.2	66,723.4	67,950.9	69,126.4
Other Items (Net)	6,659.8	6,700.5	6,495.2	7,900.3	8,471.8
<i>IFS Vertical Check</i>	<i>0.0</i>	<i>0.0</i>	<i>0.0</i>	<i>0.0</i>	<i>0.0</i>

* Included data of central bank and other depository corporations(ODCs)

** Revised Data

Table 14: Other Financial Corporations Survey*

(In Billion KHR)

	Mar-24	Apr-24	May-24	Jun-24	Jul-24
Net Foreign Assets	-1,044.1	-1,075.8	-1,029.9	-980.5	-970.6
Claims on Nonresidents	533.8	534.2	541.0	569.1	575.9
Liabilities to Nonresidents	-1,577.9	-1,610.0	-1,570.9	-1,549.5	-1,546.5
Claims on Depository Corporations	6,145.5	6,117.3	6,044.3	5,980.4	5,996.4
Net Claims on Central Government	-11.2	-11.4	-11.5	-11.2	-11.4
Claims on Central Government	4.4	4.6	4.7	4.9	5.1
Liabilities to Central Government	-15.6	-15.9	-16.2	-16.1	-16.4
Claims on Other Sectors	8,584.1	8,629.4	8,691.5	8,717.7	8,744.0
Claims on State and Local Government	0.0	0.0	0.0	0.0	0.0
Claims on Public Nonfinancial Corporations	2.6	2.6	2.6	2.6	2.6
Claims on Private Sector	8,581.5	8,626.9	8,689.0	8,715.1	8,741.3
Deposit	1.7	1.5	1.6	1.7	1.6
Securities Other Than Shares	0.8	0.8	0.8	0.0	0.0
Loans	4,964.8	4,950.6	4,928.6	4,906.5	4,977.5
Financial Derivatives	0.0	0.0	0.0	0.0	0.0
Shares and Other Equity	6,559.0	6,604.0	6,618.3	6,500.8	6,510.5
Other Items (Net)	-147.0	-192.4	-149.9	-118.0	-146.7
<i>IFS Vertical Check</i>	<i>0.0</i>	<i>0.0</i>	<i>0.0</i>	<i>0.0</i>	<i>0.0</i>

* Included only specialized banks from Dec-2013 to Dec-2020.

From Jan-2021 to present, OFCs included Specialized Banks, MFIs and Insurance Companies.

** Revised Data

Table 15: Financial Corporations Survey*

(In Billion KHR)

	Mar-24	Apr-24	May-24	Jun-24	Jul-24
Net Foreign Assets	65,506.0	67,758.7	69,910.8	73,541.9	77,811.9
Claims on Nonresidents	110,188.9	111,644.9	112,091.0	115,203.3	119,136.6
Liabilities to Nonresidents	-44,682.9	-43,886.2	-42,180.2	-41,661.4	-41,324.6
Domestic Claims	213,123.9	214,596.6	215,730.2	218,131.0	218,839.3
Net Claims on Central Government	-21,147.0	-20,942.5	-21,698.8	-22,007.9	-21,913.6
Claims on Central Government	440.5	460.2	496.5	535.4	519.7
Liabilities to Central Government	-21,587.5	-21,402.7	-22,195.2	-22,543.3	-22,433.2
Claims on Other Sectors	234,270.9	235,539.1	237,429.0	240,138.9	240,752.9
Claims on State and Local Government	0.0	0.0	0.0	0.0	0.0
Claims on Public Nonfinancial Corporations	30.0	23.2	16.1	4.4	49.2
Claims on Private Sector	234,240.9	235,515.9	237,412.9	240,134.5	240,703.7
Currency Outside Financial Corporations	15,991.0	15,831.3	14,973.6	14,798.0	14,709.7
Deposits	181,591.3	184,592.3	188,305.5	191,697.4	194,722.9
Securities Other Than Shares	0.0	0.0	0.0	0.0	0.0
Loans	6,739.6	6,869.4	6,858.9	6,848.4	7,097.7
Financial Derivatives	0.0	0.0	0.0	0.0	0.0
Shares and Other Equity	72,166.7	72,820.2	73,341.6	74,451.8	75,636.8
Other Items (Net)	-153.6	-52.9	-133.6	1,461.7	2,068.6
<i>IFS Vertical Check</i>	<i>0.0</i>	<i>0.0</i>	<i>0.0</i>	<i>0.0</i>	<i>0.0</i>

* Included data of depository corporations and other financial corporations

** Revised Data

Chart 8: Financial Corporations Survey

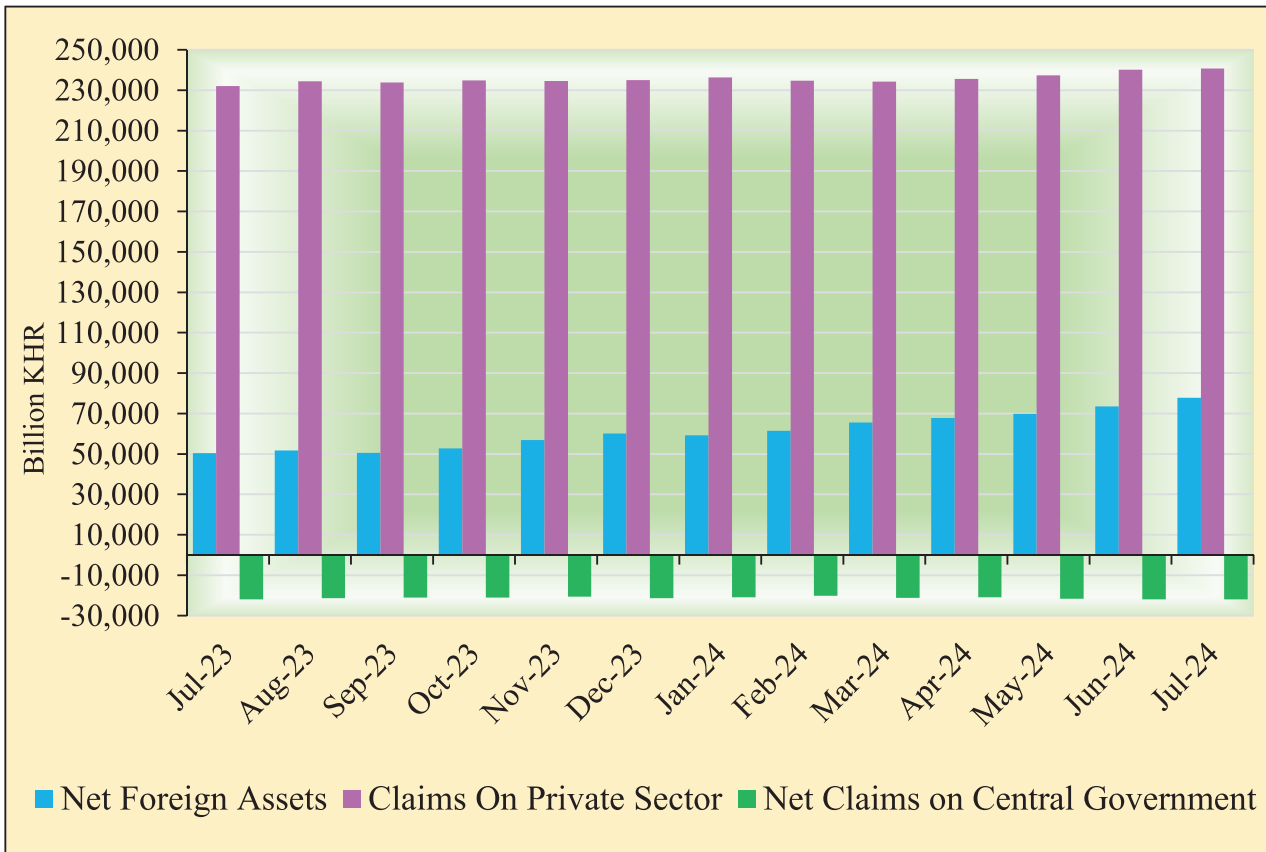


Chart 9: Monetary Aggregates Components

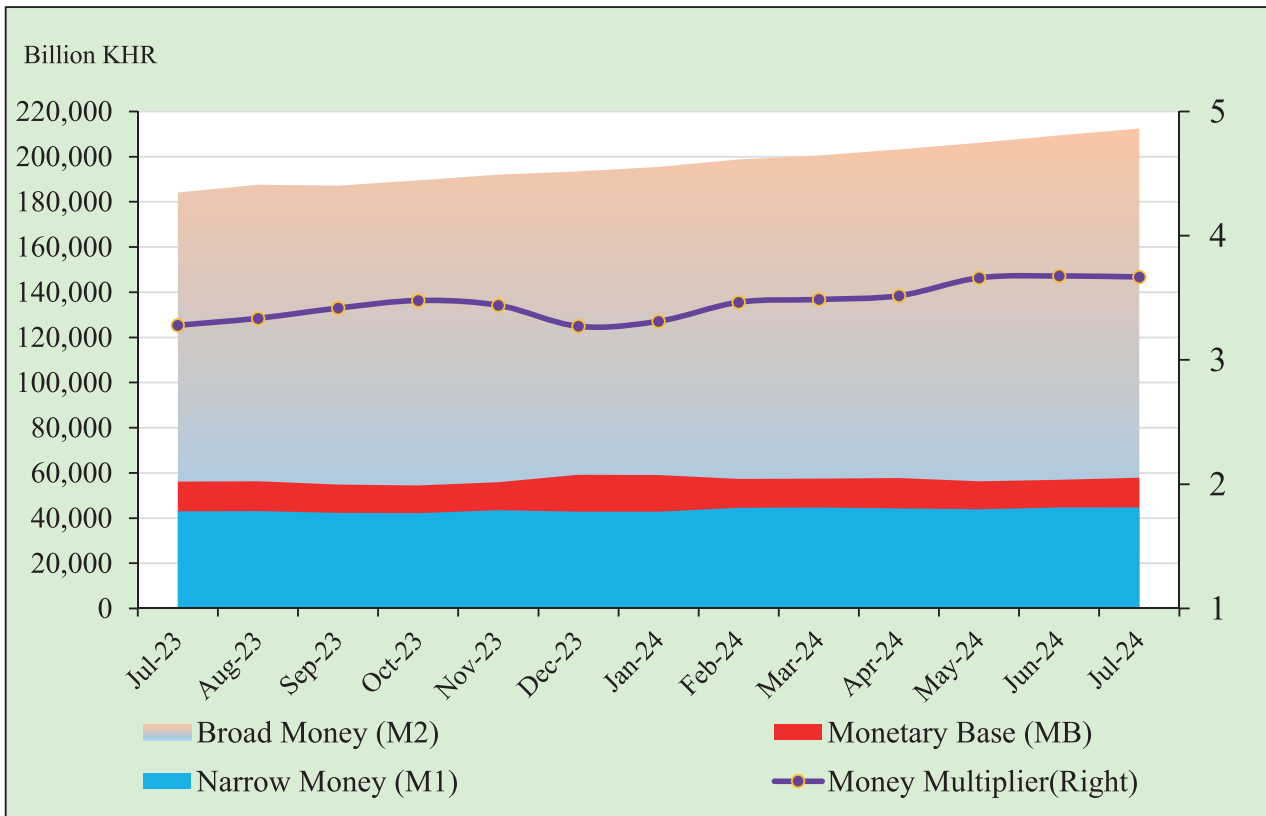


Table 16: Credit Granted by Banking Institutions Classified by Industry

(In Billion KHR)

	Mar-24	Apr-24	May-24	Jun-24	Jul-24
1. Financial Institutions	7,021.9	6,981.7	6,897.2	6,736.4	6,853.0
1.1. National Bank of Cambodia	0.0	0.0	0.0	0.0	0.0
1.2. Depository Institutions	5,255.4	5,224.4	5,130.3	4,939.4	5,072.9
1.3. Other Financial Institutions	1,766.6	1,757.3	1,766.9	1,796.9	1,780.1
2. Non-Financial Institutions	160,893.9	161,889.0	163,896.0	165,665.6	166,065.2
2.1. Agriculture, Forestry and Fishing	19,095.8	19,133.2	19,191.1	19,178.2	19,196.4
2.2. Mining and Quarrying	1,153.9	1,167.0	1,195.1	1,169.0	1,176.9
2.3. Manufacturing	9,380.5	9,274.4	9,432.0	9,503.7	9,315.2
2.4. Utilities	2,503.7	2,527.3	2,551.4	2,624.2	2,684.2
2.5. Construction	20,600.1	20,805.9	20,886.5	22,224.1	22,479.3
2.6. Wholesale Trade	18,629.1	18,868.6	18,980.9	19,326.0	19,303.8
2.7. Retail Trade	37,049.4	37,185.9	37,501.0	37,601.3	37,476.0
2.8. Hotels and Restaurants	8,120.8	8,136.6	8,193.2	8,206.9	8,360.4
2.9. Transport and Storage	6,310.8	6,385.1	6,421.6	6,390.5	6,373.7
2.10. Information Media and Telecommunications	1,059.3	1,061.0	1,052.1	1,035.7	1,034.6
2.11. Rental and Operational Leasing Activities, Excluding Real Estate Leasing and Rentals	2,862.3	2,842.3	3,002.0	2,894.2	2,997.3
2.12. Real Estate Activities	23,340.3	23,672.5	24,489.1	24,663.3	24,791.0
2.13. Other Non-Financial Services	10,788.0	10,829.1	11,000.0	10,848.5	10,876.5
3. Personal Essentials	48,981.4	49,262.4	49,002.7	49,842.3	49,990.1
3.1. Personal Lending	20,845.8	21,031.1	21,022.5	21,489.1	21,713.9
3.2. Credit Cards	733.6	740.8	749.0	782.1	799.7
3.3. Mortgages, Owner-Occupied Housing only	27,402.0	27,490.5	27,231.2	27,571.1	27,476.5
4. Other Lending	2,930.5	2,897.6	2,941.1	3,027.8	2,999.1
Total Gross Loan	219,827.7	221,030.7	222,737.0	225,272.1	225,907.4

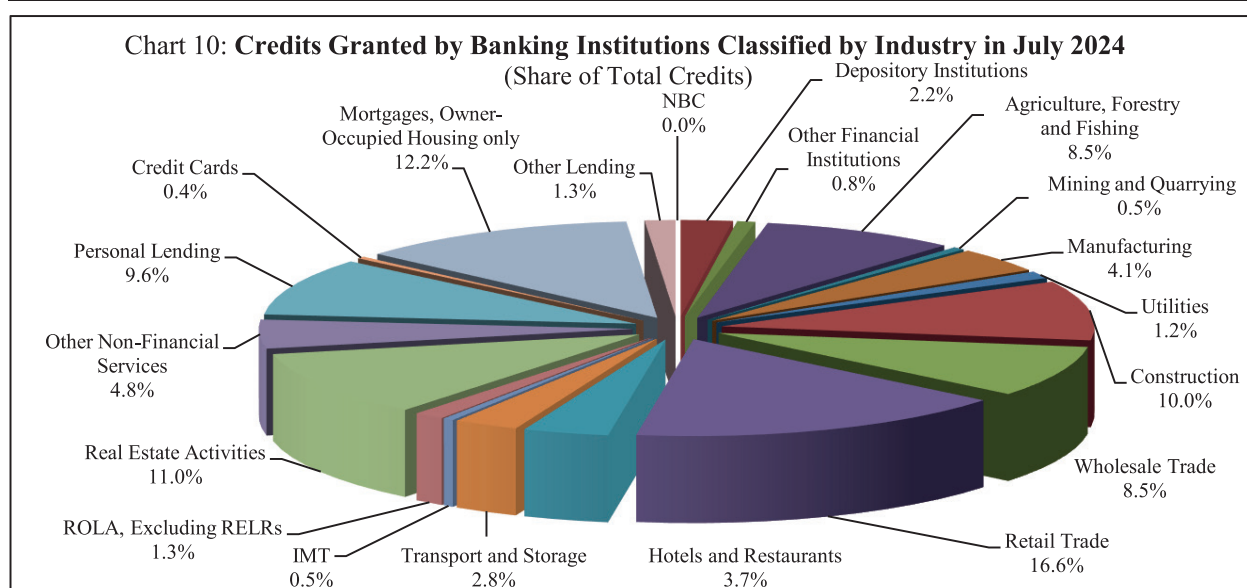


Table 17: Monthly Change of Credit Granted by Banking Institutions Classified by Industry

	Mar-24	Apr-24	May-24	Jun-24	Jul-24
(Monthly Change in Billion KHR)					
1. Financial Institutions	-347.0	-40.2	-84.5	-160.8	116.7
1.1. National Bank of Cambodia	0.0	0.0	0.0	0.0	0.0
1.2. Depository Institutions	-338.9	-31.0	-94.1	-190.9	133.5
1.3. Other Financial Institutions	-8.2	-9.2	9.6	30.0	-16.8
2. Non-Financial Institutions	-532.3	995.1	2,007.0	1,769.6	399.6
2.1. Agriculture, Forestry and Fishing	-154.9	37.4	57.9	-12.9	18.1
2.2. Mining and Quarrying	18.6	13.1	28.1	-26.1	8.0
2.3. Manufacturing	-67.2	-106.1	157.6	71.7	-188.5
2.4. Utilities	14.3	23.7	24.1	72.8	60.0
2.5. Construction	163.4	205.8	80.6	1,337.6	255.2
2.6. Wholesale Trade	-322.8	239.5	112.3	345.1	-22.3
2.7. Retail Trade	-287.5	136.6	315.1	100.2	-125.3
2.8. Hotels and Restaurants	-15.9	15.8	56.6	13.8	153.4
2.9. Transport and Storage	-44.5	74.3	36.5	-31.1	-16.8
2.10. Information Media and Telecommunications	29.9	1.7	-8.9	-16.4	-1.1
2.11. Rental and Operational Leasing Activities, Excluding Real Estate Leasing and Rentals	-57.8	-20.0	159.7	-107.8	103.1
2.12. Real Estate Activities	518.4	332.2	816.6	174.2	127.7
2.13. Other Non-Financial Services	-326.3	41.1	170.9	-151.5	27.9
3. Personal Essentials	315.4	280.9	-259.7	839.6	147.9
3.1. Personal Lending	505.9	185.3	-8.6	466.6	224.8
3.2. Credit Cards	12.9	7.1	8.2	33.1	17.6
3.3. Mortgages, Owner-Occupied Housing only	-203.4	88.5	-259.3	339.9	-94.6
4. Other Lending	-31.7	-32.9	43.5	86.8	-28.8
Total Gross Loan	-595.6	1,203.0	1,706.2	2,535.1	635.4
(Monthly Percentage Change)					
1. Financial Institutions	-4.7	-0.6	-1.2	-2.3	1.7
1.1. National Bank of Cambodia	0.0	0.0	0.0	0.0	0.0
1.2. Depository Institutions	-6.1	-0.6	-1.8	-3.7	2.7
1.3. Other Financial Institutions	-0.5	-0.5	0.5	1.7	-0.9
2. Non-Financial Institutions	-0.3	0.6	1.2	1.1	0.2
2.1. Agriculture, Forestry and Fishing	-0.8	0.2	0.3	-0.1	0.1
2.2. Mining and Quarrying	1.6	1.1	2.4	-2.2	0.7
2.3. Manufacturing	-0.7	-1.1	1.7	0.8	-2.0
2.4. Utilities	0.6	0.9	1.0	2.9	2.3
2.5. Construction	0.8	1.0	0.4	6.4	1.1
2.6. Wholesale Trade	-1.7	1.3	0.6	1.8	-0.1
2.7. Retail Trade	-0.8	0.4	0.8	0.3	-0.3
2.8. Hotels and Restaurants	-0.2	0.2	0.7	0.2	1.9
2.9. Transport and Storage	-0.7	1.2	0.6	-0.5	-0.3
2.10. Information Media and Telecommunications	2.9	0.2	-0.8	-1.6	-0.1
2.11. Rental and Operational Leasing Activities, Excluded Real Estate Leasing and Rentals	-2.0	-0.7	5.6	-3.6	3.6
2.12. Real Estate Activities	2.3	1.4	3.4	0.7	0.5
2.13. Other Non-Financial Services	-2.9	0.4	1.6	-1.4	0.3
3. Personal Essentials	0.6	0.6	-0.5	1.7	0.3
3.1. Personal Lending	2.5	0.9	0.0	2.2	1.0
3.2. Credit Cards	1.8	1.0	1.1	4.4	2.3
3.3. Mortgages, Owner-Occupied Housing only	-0.7	0.3	-0.9	1.2	-0.3
4. Other Lending	-1.1	-1.1	1.5	2.9	-0.9
Total Gross Loan	-0.3	0.5	0.8	1.1	0.3

Table 18: Deposits with Banks

(In Billion KHR)

	Mar-24	Apr-24	May-24	Jun-24	Jul-24
Deposits in KHR					
Demand deposits	4,691.9	4,620.7	4,551.7	5,111.9	5,053.9
Savings deposits	4,242.8	4,253.6	4,434.6	4,829.0	4,983.9
Fixed deposits	12,291.8	12,546.5	12,944.2	13,143.9	13,464.0
Others	416.7	438.5	448.5	455.7	465.3
Total	21,643.2	21,859.4	22,379.0	23,540.5	23,967.2
Deposits in Foreign Currency*					
Demand deposits	28,762.3	27,981.8	28,931.2	29,576.5	29,594.7
Savings deposits	43,382.8	44,270.5	45,068.2	45,864.1	47,018.9
Fixed deposits	98,802.1	100,969.0	103,152.2	104,128.4	105,389.9
Others	2,905.2	3,090.4	3,063.4	3,146.5	3,301.9
Total	173,852.4	176,311.7	180,214.9	182,715.5	185,305.4
Grand Total	195,495.6	198,171.0	202,593.9	206,256.0	209,272.6

* Deposits in foreign currency include deposits of Cambodian residents and non-residents

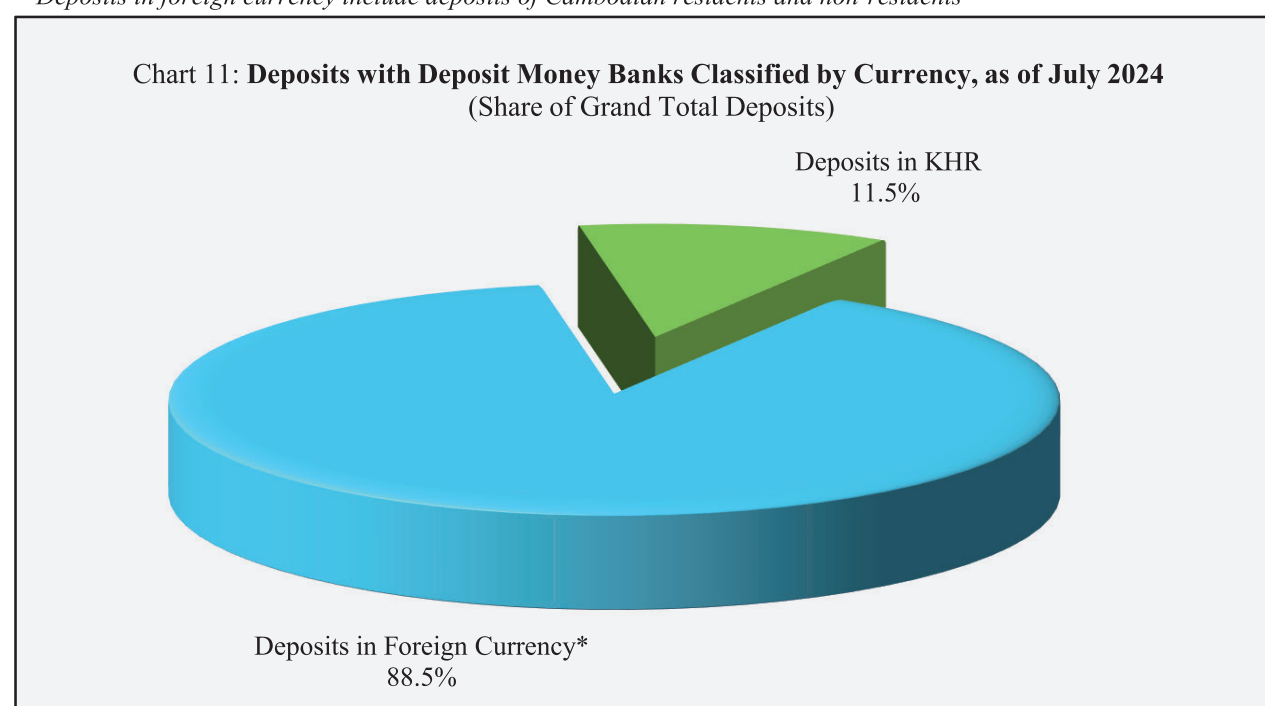


Table 19: Monthly Change of Deposits with Banks

	Mar-24	Apr-24	May-24	Jun-24	Jul-24
(Change in Billion KHR)					
Deposits in KHR					
Demand deposits	160.8	-71.1	-69.0	560.2	-58.0
Savings deposits	-42.0	10.8	181.1	394.4	154.9
Fixed deposits	-338.2	254.7	397.7	199.7	320.1
Others	-9.0	21.8	9.9	7.3	9.6
Total	-228.4	216.2	519.7	1,161.5	426.7
Deposits in Foreign Currency					
Demand deposits	53.5	-780.4	949.4	645.3	18.2
Savings deposits	1,149.5	887.7	797.7	795.9	1,154.8
Fixed deposits	1,076.8	2,166.8	2,183.2	976.2	1,261.5
Others	44.3	185.2	-27.0	83.1	155.4
Total	2,324.2	2,459.3	3,903.3	2,500.6	2,589.9
Grand Total	2,095.8	2,675.4	4,422.9	3,662.1	3,016.6
(Percentage Change)					
Deposits in KHR					
Demand deposits	3.5	-1.5	-1.5	12.3	-1.1
Savings deposits	-1.0	0.3	4.3	8.9	3.2
Fixed deposits	-2.7	2.1	3.2	1.5	2.4
Others	-2.1	5.2	2.3	1.6	2.1
Total	-1.0	1.0	2.4	5.2	1.8
Deposits in Foreign Currency					
Demand deposits	0.2	-2.7	3.4	2.2	0.1
Savings deposits	2.7	2.0	1.8	1.8	2.5
Fixed deposits	1.1	2.2	2.2	0.9	1.2
Others	1.5	6.4	-0.9	2.7	4.9
Total	1.4	1.4	2.2	1.4	1.4
Grand Total	1.1	1.4	2.2	1.8	1.5

Chart 12: Deposits in KHR Classified by Type, as of July 2024

(Share of Total KHR Deposits)

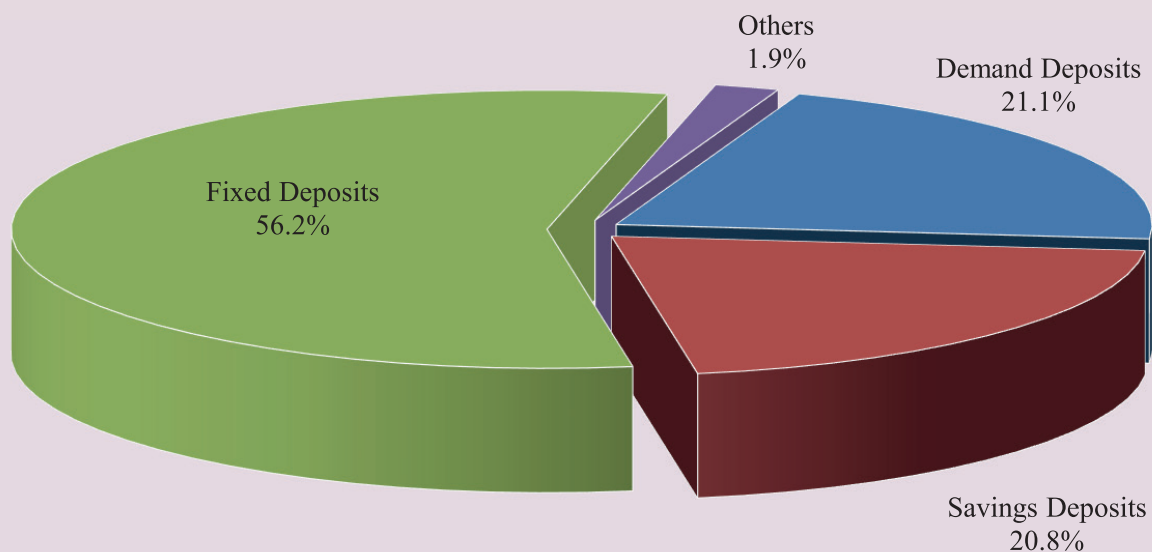


Chart 13: Deposits in Foreign Currency Classified by Type, as of July 2024

(Share of Total Foreign Currency Deposits)

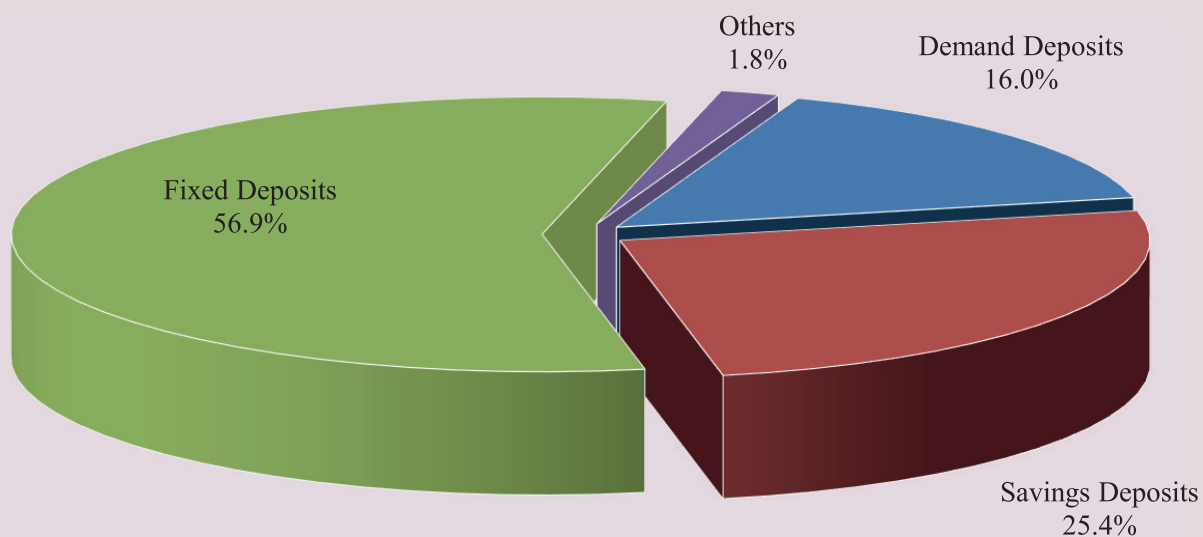


Table 20: Credit Granted by Micro-Finance Institutions*

Period	Numbers of				Loan Outstanding (In Billion KHR)	Interest Rate	
	District	Commune	Village	Household		Monthly	Annually
Dec-14	2,754	18,254	107,964	1,844,893	8,340	2% - 3%	27%-39%
Dec-15	4,576	27,510	141,514	2,149,180	12,365	2% - 4%	25%-41%
Dec-16	5,971	32,599	155,499	2,129,907	12,954	2% - 4%	25%-41%
2017*							
	Numbers of Branches			Number of Borrowers**	Loan Outstanding (In Billion KHR)	Interest Rate	
	Head Office	Province/ Krong	District/Khan			Monthly	Annually
Dec-17	76	366	975	1,776,467	17,236	1.4%-2.5%	16.9%-28.8%
Dec-18	80	399	944	1,872,916	21,813	1.2%-2.0%	15.1%-24.0%
Dec-19	82	406	965	2,109,170	29,357	1.1%-1.6%	13.4%-18.7%
Dec-20	79	343	749	1,919,926	27,527	1.1%-1.6%	13.4%-18.3%
Dec-21	77	325	664	1,897,878	31,723	1.1%-1.5%	13.3%-17.6%
2022							
Aug	85	339	678	2,070,163	37,189	1.1%-1.4%	13.2%-17.3%
Sep	85	340	678	2,093,002	37,725	1.1%-1.4%	13.0%-17.3%
Oct	86	340	678	2,111,552	38,374	1.1%-1.5%	13.1%-17.4%
Nov	86	340	678	2,121,312	38,761	1.1%-1.4%	13.0%-17.3%
Dec	86	343	679	2,129,150	38,932	1.1%-1.4%	13.0%-17.3%
2023							
Jan	87	342	676	2,138,432	39,335	1.1%-1.5%	13.1%-17.9%
Feb	87	342	676	2,149,437	39,255	1.0%-1.5%	12.1%-17.9%
Mar	87	346	678	2,164,707	39,684	1.0%-1.5%	12.1%-17.9%
Apr	87	346	683	2,169,008	40,068	1.0%-1.5%	12.1%-17.9%
May	87	358	674	2,179,962	40,022	1.0%-1.5%	11.6%-17.9%
Jun	87	362	672	2,185,693	40,198	1.0%-1.5%	11.5%-17.9%
Jul	87	362	671	2,188,142	40,269	0.9%-1.5%	10.2%-18.1%
Aug	87	359	652	2,163,738	40,710	0.8%-1.5%	10.2%-18.3%
Sep	86	310	517	1,625,506	21,240	1.0%-1.5%	12.2%-18.1%
Oct	87	309	518	1,627,775	21,299	1.0%-1.5%	12.1%-18.1%
Nov	87	308	517	1,626,914	21,182	1.0%-1.5%	12.1%-18.1%
Dec	87	310	515	1,620,818	21,036	1.0%-1.5%	12.1%-18.1%
2024							
Jan	87	311	516	1,619,022	21,086	1.0%-1.5%	12.1%-18.1%
Feb	87	310	514	1,617,466	21,065	1.0%-1.5%	12.1%-18.1%
Mar	87	308	513	1,614,548	20,973	1.0%-1.5%	11.9%-18.1%
Apr	87	310	516	1,606,045	20,975	1.0%-1.5%	12.1%-18.1%
May	87	309	515	1,606,776	21,076	1.0%-1.5%	12.0%-18.1%
Jun	88	309	515	1,601,907	21,256	1.0%-1.5%	12.0%-18.2%
Jul	88	311	514	1,604,177	21,352	1.0%-1.5%	12.0%-18.2%

* Including MFI and MDI

** Including Individuals and Legal Entities

*** Revised Data

Table 21: KHR-Denominated Checks Clearing through Clearing House

Date	Number of Cleared Check	Number of Working Day	Number of Cleared Check Per Day	Total Amount (In Billion KHR)	Daily Average Amount (In Billion KHR)	Returned Check	
						Number	Amount (In Billion KHR)
	1	2	3 = 1/2	4	5 = 4/2	6	7
Dec-16	3,938	22	179	490.0	22.3	13	3.15
Total	82,291	242	340	5,421.8	22.4	186	117.50
Dec-17	3,074	20	154	599.0	30.0	22	12.48
Total	37,485	239	1,885	6,607.8	27.6	138	28.51
Dec-18	2,994	19	158	935.1	49.2	16	6.58
Total	38,249	232	165	9,424.1	40.6	197	152.90
Dec-19	3,734	21	178	1,584.1	75.4	18	11.33
Total	41,696	236	177	13,602.7	57.6	206	630.84
Dec-20	3,264	23	142	1,839.6	80.0	5	0.57
Total	35,570	240	148	22,955.3	95.6	101	5,074.92
Dec-21	3,028	23	132	1,763.0	76.7	14	26.86
Total	31,749	242	131	19,089.4	78.9	99	466.43
2022							
Sep	2,654	21	126	1,421.7	67.7	6	12.03
Oct	2,771	21	132	1,776.9	84.6	7	1.48
Nov	2,721	19	143	1,791.4	94.3	2	0.03
Dec	3,106	22	141	1,898.0	86.3	8	1.79
Total	33,608	251	134	19,831.3	79.0	68	88.91
2023							
Jan	2,683	22	122	1,693.0	77.0	6	22.70
Feb	2,775	20	139	1,780.5	89.0	5	0.50
Mar	3,141	22	143	2,588.0	117.6	20	16.40
Apr	2,680	19	141	1,785.5	94.0	7	0.40
May	2,832	20	142	1,749.9	87.5	16	11.80
Jun	2,991	22	136	1,880.9	85.5	6	0.10
Jul	2,578	20	129	1,421.8	71.1	9	10.36
Aug	3,112	23	135	1,791.1	77.9	14	1.90
Sep	2,793	21	133	1,730.6	82.4	9	1.55
Oct	2,792	21	133	1,682.6	80.1	22	9.83
Nov	2,553	19	134	1,665.6	87.7	26	1.80
Dec	3,179	21	151	2,233.3	106.3	14	56.82
Total	34,109	250	136	22,002.8	88.0	154	134.16
2024							
Jan	2,706	22	123	1,867.4	84.9	6	5.83
Feb	2,859	21	136	1,410.9	67.2	8	3.51
Mar	2,822	20	141	2,019.4	101.0	8	1.60
Apr	2,718	20	136	1,750.6	87.5	14	93.25
May	2,773	20	139	1,745.9	87.3	11	3.27
Jun	2,639	19	139	1,476.0	77.7	6	1.73
Jul	2,815	23	122	1,839.9	80.0	8	0.80
Total	19,332	145	133	12,110.1	83.5	61	109.99

Table 22: USD-Denominated Checks Clearing through Clearing House

Date	Number of	Number of	Number of	Total	Daily Average	Returned Checks	
	Checks	days	Cleared Check	Amount	Amount	Number	Amount
	Cleared	Cleared	per Day	(In Million USD)	(In Million USD)		(In Million USD)
	1	2	3 = 1/2	4	5 = 4/2	6	7
Dec-16	92,820	22	4,219	2,220.4	100.9	778	44.8
Total	1,025,209	242	4,236	21,790.4	90.0	8,738	439.6
Dec-17	101,093	20	5,055	2,824.6	141.2	789	37.6
Total	1,107,752	239	4,635	26,812.7	112.2	8,863	440.4
Dec-18	111,978	19	5,894	3,917.1	206.2	904	63.6
Total	1,238,232	232	5,337	41,462.7	178.7	10,474	2,686.1
Dec-19	121,353	21	5,779	4,448.5	211.8	964	87.1
Total	1,337,800	236	5,669	51,609.1	218.7	10,654	3,779.9
Dec-20	111,749	23	4,859	4,369.7	190.0	714	45.0
Total	1,200,110	240	5,000	50,220.0	209.3	8,620	8,737.8
Dec-21	104,666	23	4,551	5,002.1	217.5	672	65.5
Total	1,077,104	242	4,451	46,380.6	191.7	8,423	517.9
2022							
Aug	100,482	23	4,369	4,507.6	196.0	771	64.5
Sep	87,331	21	4,159	4,301.1	204.8	705	73.3
Oct	89,781	21	4,275	5,054.4	240.7	779	1,076.3
Nov	86,441	19	4,550	3,771.7	198.5	864	71.5
Dec	97,561	22	4,435	4,152.9	188.8	948	78.7
Total	1,105,712	251	4,405	53,853.9	214.6	8,739	1,764.0
2023							
Jan	85,292	22	3,877	3,749.7	170.4	886	103.8
Feb	81,623	20	4,081	3,644.1	182.2	941	83.9
Mar	97,101	22	4,414	4,207.1	191.2	1,045	79.3
Apr	78,164	19	4,114	3,471.0	182.7	861	66.2
May	94,501	20	4,725	3,836.8	191.8	1,054	86.9
Jun	89,627	22	4,074	3,911.5	177.8	958	78.2
Jul	84,307	20	4,215	3,600.8	180.0	1,018	62.8
Aug	91,909	23	3,996	3,755.6	163.3	1,059	74.0
Sep	83,733	21	3,987	3,399.1	161.9	963	52.6
Oct	84,135	21	4,006	3,327.6	158.5	920	55.9
Nov	80,278	19	4,225	3,245.3	170.8	935	78.6
Dec	91,040	21	4,335	4,284.5	204.0	957	58.5
Total	1,041,710	250	4,167	44,433.1	177.7	11,597	880.6
2024							
Jan	89,845	22	4,084	3,929.3	178.6	907	205.6
Feb	79,161	21	3,770	3,504.7	166.9	865	49.7
Mar	83,061	20	4,153	3,939.2	197.0	795	60.1
Apr	83,184	20	4,159	3,731.5	186.6	847	56.5
May	87,578	20	4,379	4,040.0	202.0	989	70.2
Jun	79,542	19	4,186	3,726.2	196.1	797	130.5
Jul	93,088	23	4,047	4,170.8	181.3	841	43.8
Total	595,459	145	4,107	27,041.8	186.5	6,041	616.4

Table 23: Visitor Arrivals in Cambodia

	2024			% of Total		% Change	
	May	June	July	June	July	Jun/May	July/Jun
(Mode of Arrival)							
Phnom Penh International Airport	129,367	132,524	153,510	25.2	26.7	2.4	15.8
Kong Keng International Airport	1,123	1,156	2,609	0.2	0.5	2.9	125.7
Siem Reap International Airport	30,988	31,775	38,083	6.0	6.6	2.5	19.9
Land	359,991	357,339	377,930	68.0	65.6	-0.7	5.8
Boat	2,921	2,704	3,601	0.5	0.6	-7.4	33.2
Preah Vihea	0	0	0	0.0	0.0	0.0	0.0
Total	524,390	525,498	575,733	100.0	100.0	0.2	9.6
(Arrival by Purpose of Visit)							
Tourist	403,892	404,223	442,248	76.9	76.8	0.1	9.4
Business and Professional	111,155	109,064	116,678	20.8	20.3	-1.9	7.0
Others and not specified	9,343	12,211	16,807	2.3	2.9	30.7	37.6
Total	524,390	525,498	575,733	100.0	100.0	0.2	9.6
(Top-Ten Countries of Passenger Arrivals)							
Thailand	182,059	184,879	192,284	35.2	33.4	1.5	4.0
Vietnam	113,886	111,297	117,888	21.2	20.5	-2.3	5.9
China (PRC)	65,548	63,357	74,620	12.1	13.0	-3.3	17.8
Lao PDR	36,295	34,706	36,145	6.6	6.3	-4.4	4.1
United States of America	12,754	16,427	17,474	3.1	3.0	28.8	6.4
South Korea	10,632	12,342	15,788	2.3	2.7	16.1	27.9
Indonesia	15,032	13,819	13,785	2.6	2.4	-8.1	-0.2
France	6,501	5,475	10,487	1.0	1.8	-15.8	91.5
Malaysia	7,823	9,121	8,047	1.7	1.4	16.6	-11.8
United Kingdom	7,081	5,702	7,844	1.1	1.4	-19.5	37.6
Others	66,779	68,373	81,371	13.0	14.1	2.4	19.0
Total	524,390	525,498	575,733	100.0	100.0	0.2	9.6

Source: Ministry of Tourism

** Increased in times, not in percentage (%).*

Table 24: Cambodia's Imports and Exports

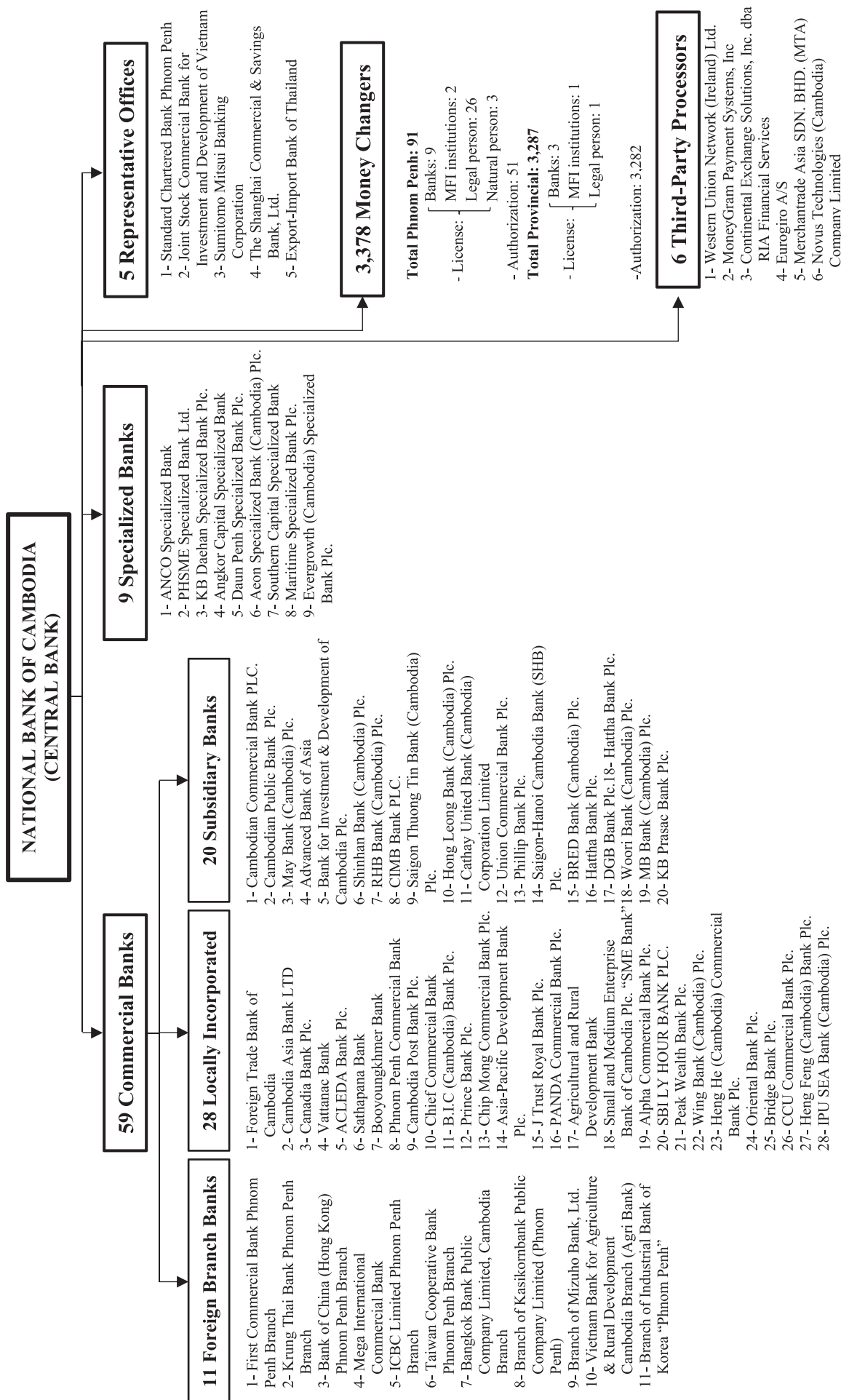
(In Billion KHR)

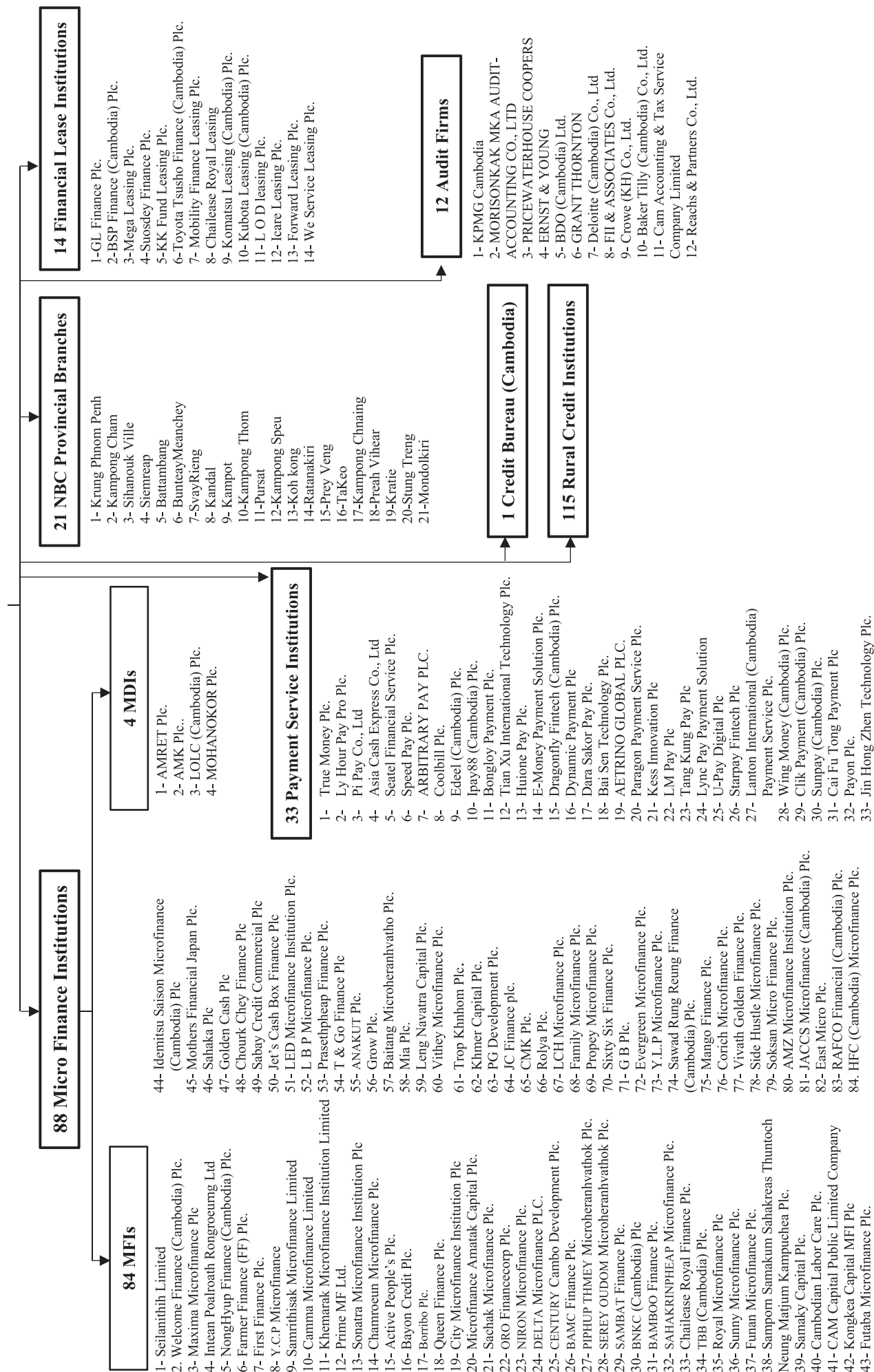
	2024			Change in Billion KHR		Change in %	
	May	June	July	Jun/May	Jul/June	Jun/May	Jul/June
Imports by Commodity							
Medicine	86.1	96.3	103.6	10.2	7.3	11.9	7.6
Cigarette	85.4	92.0	59.6	6.6	-32.4	7.7	-35.2
Food and Beverage	421.3	436.6	459.5	15.3	23.0	3.6	5.3
Equipment Construction	385.0	367.3	387.4	-17.7	20.1	-4.6	5.5
Cement	5.6	6.0	5.3	0.5	-0.7	8.4	-12.2
Steel	286.0	237.9	232.0	-48.1	-5.9	-16.8	-2.5
Phones	4.5	4.1	15.6	-0.4	11.5	-8.8	280.2
T.V	1.7	2.1	1.4	0.3	-0.6	20.3	-30.9
Other Electronic Equipment	112.2	132.6	140.2	20.4	7.6	18.2	5.7
Garment	242.5	222.6	269.9	-19.9	47.4	-8.2	21.3
Fabric	2,435.3	1,991.0	1,995.3	-444.3	4.3	-18.2	0.2
Vehicle	507.2	622.9	469.9	115.7	-153.0	22.8	-24.6
Equipment of Cold	34.5	44.4	33.9	9.9	-10.5	28.6	-23.6
Gold	0.0	0.0	0.5	0.0	0.5		
Oil	1,385.8	1,200.3	1,251.5	-185.5	51.2	-13.4	4.3
Fertilizer	93.5	101.7	120.2	8.2	18.5	8.8	18.2
Others	4,522.3	4,841.5	5,249.7	319.2	408.2	7.1	8.4
Total Imports	10,608.7	10,399.3	10,795.6	-209.5	396.3	-2.0	3.8
Exports by Commodity							
Garment	3,390.8	3,710.7	4,053.8	319.9	343.1	9.4	9.2
Footwear	658.6	654.6	615.5	-3.9	-39.1	-0.6	-6.0
Other Textile Product	866.9	885.7	969.3	18.8	83.5	2.2	9.4
Electrical Part	532.3	673.6	636.7	141.3	-36.9	26.5	-5.5
Vehicle and Bicycle Part	91.0	85.3	85.2	-5.7	-0.1	-6.2	-0.2
Bicycle	153.4	146.7	152.4	-6.7	5.6	-4.4	3.8
Wood Products	178.5	184.7	173.8	6.1	-10.9	3.4	-5.9
Rice	141.7	124.3	106.8	-17.4	-17.4	-12.3	-14.0
Rubber	136.3	180.8	213.3	44.5	32.5	32.6	18.0
Fish and Other Agricultural Products	486.1	270.1	428.9	-216.1	158.9	-44.4	58.8
Others	1,916.7	2,319.5	2,994.8	402.7	675.3	21.0	29.1
Total Exports	8,552.4	9,236.0	10,430.6	683.6	1,194.6	8.0	12.9

*Source: General Department of Cambodia Customs and Excise*** Increased in times, not in percentage (%).**** Revised Data*

Table 25: THE BANKING SYSTEM IN CAMBODIA

As of 31 July 2024





អ៊ីនធឺណែត

INTERNET

: www.nbc.gov.kh គឺជាគេហទំព័ររបស់ធនាគារជាតិនៃកម្ពុជា។ ទិន្នន័យថ្មីៗក្នុងគេហទំព័រ និង ទិន្នន័យបន្តបន្ទាប់ទៀត ត្រូវបាននិងកំពុងដាក់បញ្ចូលទៅក្នុងប្រព័ន្ធទិន្នន័យ តាមធនធានដែលមាន។ លើសពីនេះទៀត គេហទំព័រនេះ គឺជាទីតាំងដ៏ល្អបំផុតដើម្បីទទួលបានទិន្នន័យសង្ខេបនៃការចេញផ្សាយចុងក្រោយបង្អស់។

www.nbc.gov.kh is the National Bank of Cambodia website. The website new data and metadata are progressively being added to the database, as resources permit. This website is the best place to start for access to summary data from the latest publications.

សេវាព័ត៌មាន

INFORMATION SERVICE

: បុគ្គលិករបស់នាយកដ្ឋានស្ថិតិ នៃធនាគារជាតិនៃកម្ពុជា អាចជួយចង្អុលបង្ហាញ ឬណែនាំអ្នកប្រើប្រាស់ក្នុងការស្វែងរកទិន្នន័យតាមតម្រូវការ។ ការបោះពុម្ពផ្សាយរបស់ធនាគារជាតិនៃកម្ពុជា អាចរកជាវបាន ហើយសេវាលើការជាវជាប្រចាំក៏អាចរៀបចំបានដែរ។ ចំពោះសេវាលើទិន្នន័យពិសេសផ្សេងទៀតក៏អាចរកបានផងដែរ តាមរយៈការមកជាវព្រឹត្តិបត្រដោយផ្ទាល់។

The Statistics Department staff of the National Bank of Cambodia can assist users in addressing their data requirements. The National Bank of Cambodia publications are available for sale and subscription services can be arranged. Other special data services are also available, on a user pays basis.

អាសយដ្ឋានទំនាក់ទំនង

CONTACT DETAILS

ធនាគារជាតិនៃកម្ពុជា

NATIONAL BANK OF CAMBODIA

នាយកដ្ឋានស្ថិតិ

Statistics Department

អគារលេខ ៦៩-៧០ មហាវិថីហាណូយ (លេខ១០១៩) ភូមិបាយ៉ាប សង្កាត់ភ្នំពេញថ្មី

ខណ្ឌសែនសុខ រាជធានីភ្នំពេញ

#69-70, Hanoi Blvd. (1019), Phum Bayab, Sangkat Phnom Penh Thmei,

Khan Sen Sok, Phnom Penh

អ៊ីម៉ែល : statistics@nbc.gov.kh

E-mail : statistics@nbc.gov.kh

ទូរស័ព្ទ : (៨៥៥) ២៣ ៧២២ ៥៦៣ – ១១១៥

Telephone : (855) 23 722 563 – 1115

ទូរសារ : (៨៥៥) ២៣ ៤២៦ ១១៧

Facsimile : (855) 23 426 117



ISSN 2074-5680

ផលិតដោយ ធនាគារជាតិនៃកម្ពុជា

Produced by the National Bank of Cambodia